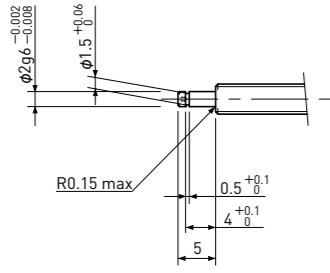


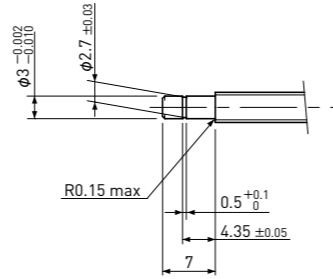
● Standardized end-journal profile

KSS Support Units are designed to fit standard end-journal profile of KSS Miniature Ball Screws. Table below shows KSS Support Units list corresponding to standard end-journal profile.

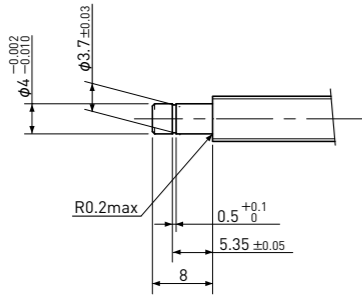
[Supported side]



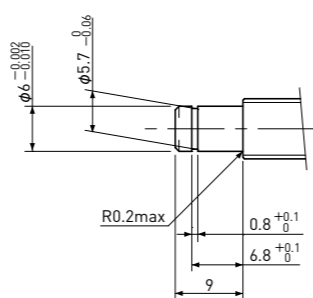
Brg. Inner dia.	Support Unit model
φ2	MSU-3CS / MSU-3GS



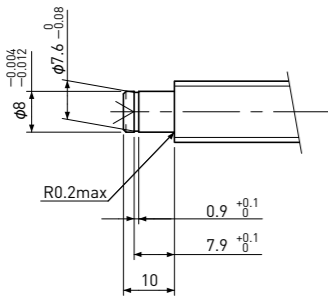
Brg. Inner dia.	Support Unit model
φ3	MSU-4CS / MSU-4GS, SUP03-S



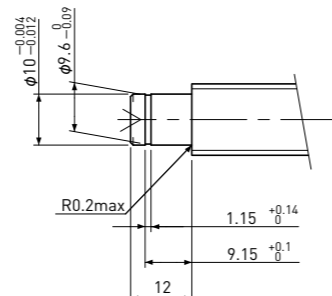
Brg. Inner dia.	Support Unit model
φ4	MSU-5CS / MSU-5GS, SUP04-S



Brg. Inner dia.	Support Unit model
φ6	MSU-6CS / MSU-6GS, EF6 MSU-8CS / MSU-8GS, EF8

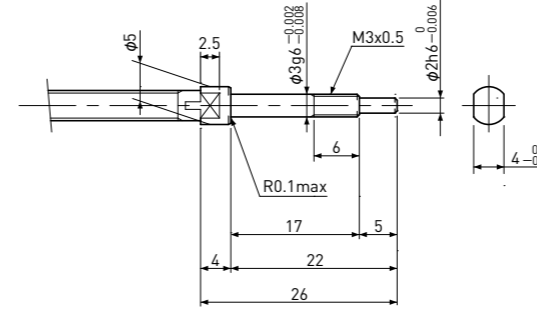


Brg. Inner dia.	Support Unit model
φ8	EF10

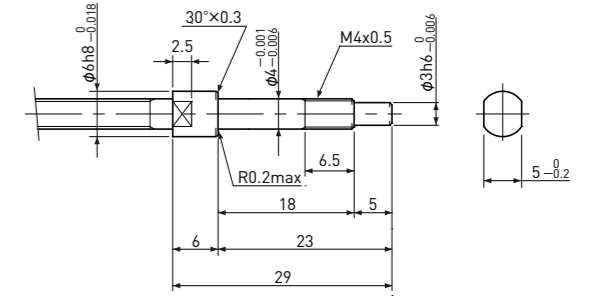


Brg. Inner dia.	Support Unit model
φ10	EF12

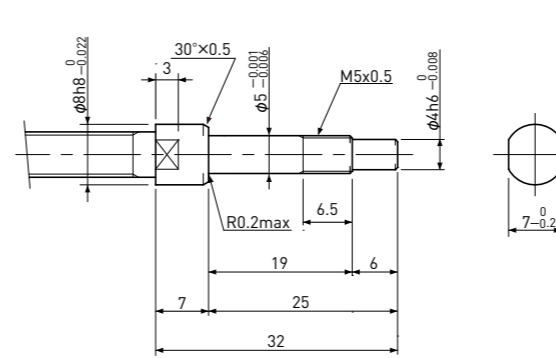
[Fixed side]



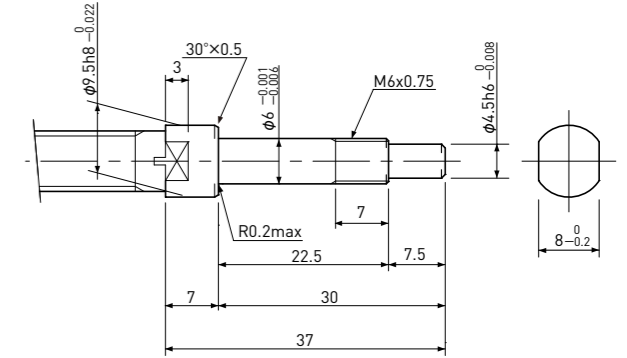
Brg. Inner dia.	Support Unit model
φ3	MSU-3C / MSU-3G



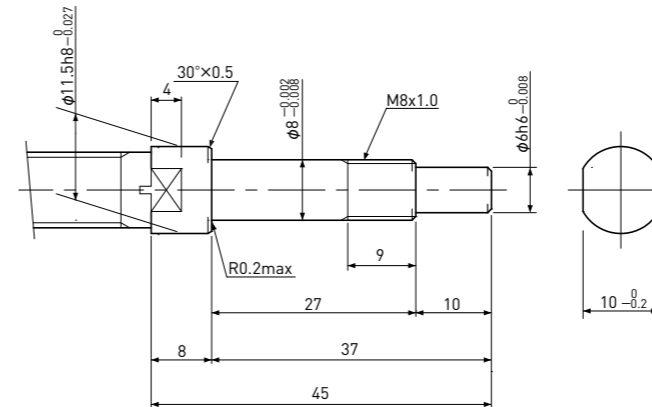
Brg. Inner dia.	Support Unit model
φ4	MSU-4C / MSU-4G, EK4



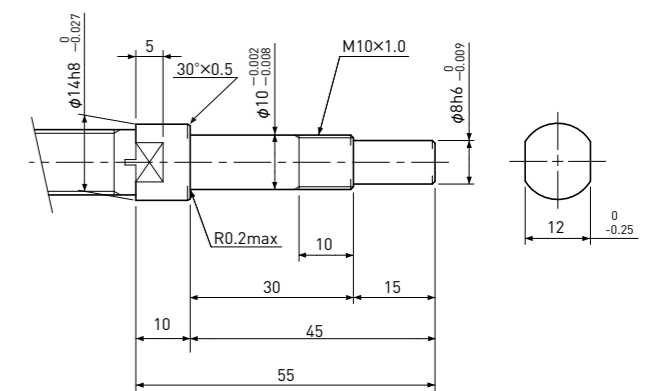
Brg. Inner dia.	Support Unit model
φ5	MSU-5C / MSU-5G, EK5



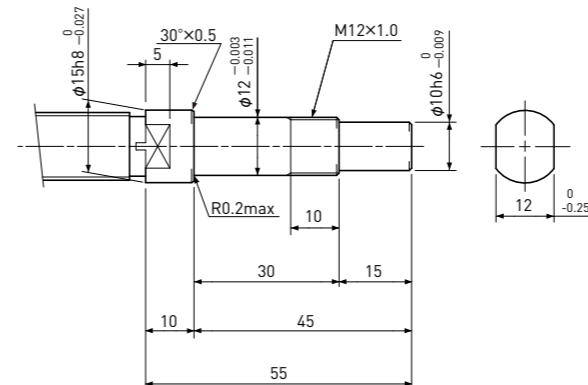
Brg. Inner dia.	Support Unit model
φ6	MSU-6C / MSU-6G, EK6



Brg. Inner dia.	Support Unit model
φ8	MSU-8C / MSU-8G, EK8



Brg. Inner dia.	Support Unit model
φ10	EK10

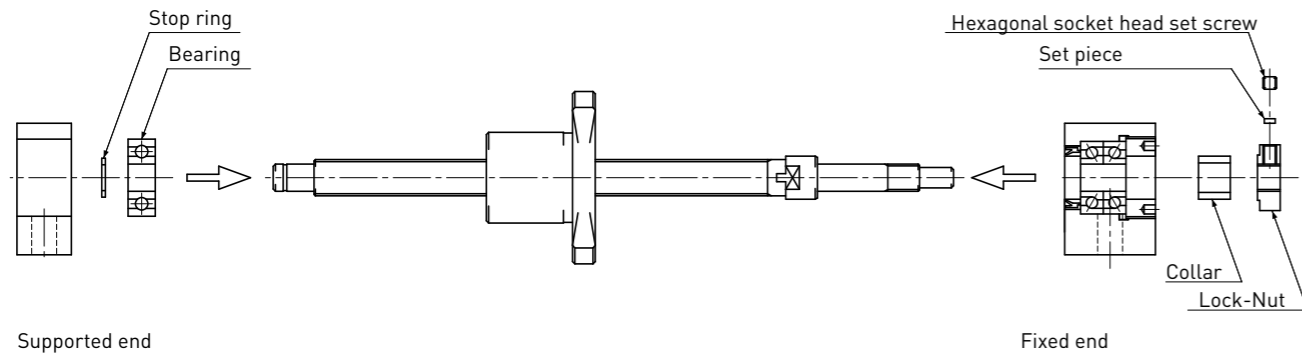


Brg. Inner dia.	Support Unit model
φ12	EK12

● Mounting procedure

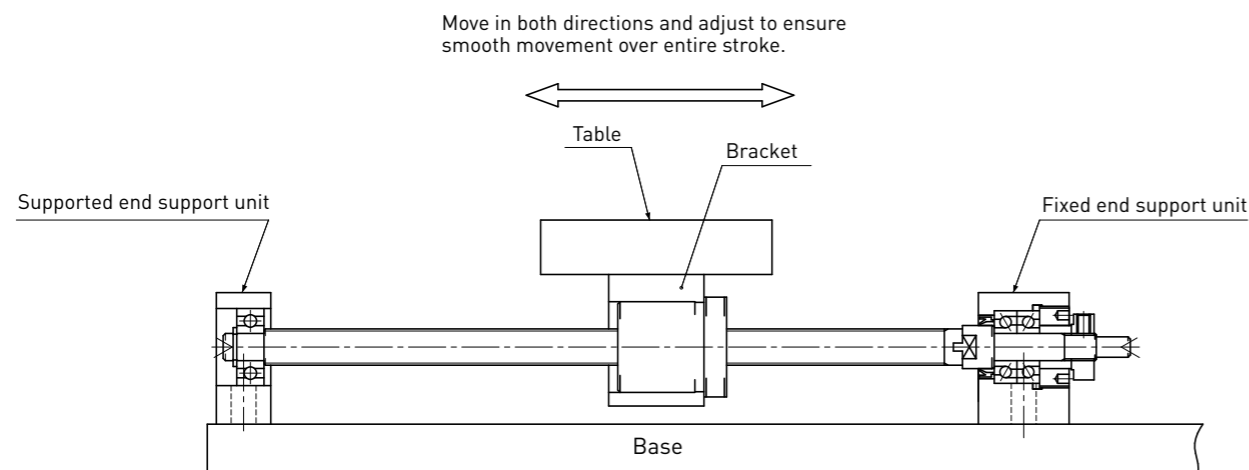
1. Assembling Support Unit

- 1) Mount the fixed end Support Unit onto the Ball Screw.
Note 1) Do not disassemble the Support Unit.
- 2) Tighten the Lock-Nut after inserting into the fixed end Support Unit, and secure using the set piece and hexagonal socket head set screw.
Note 1) Make sure that the set piece is not allowed to curl.
- 3) Mount the supported end Bearing, secure with the stop ring, and fit into the Housing.



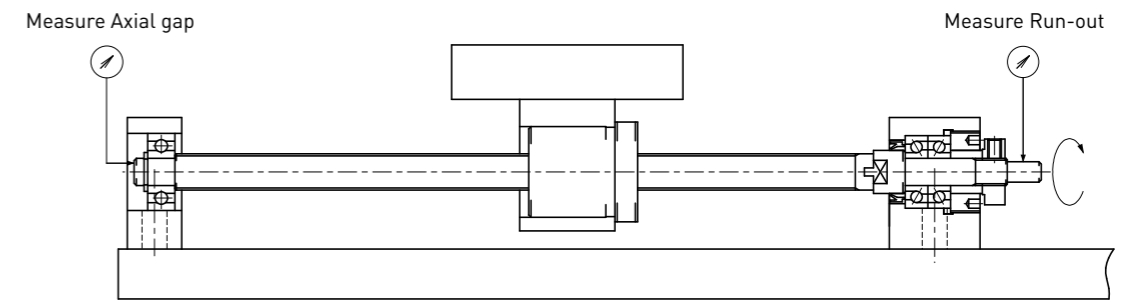
2. Mounting the table on the Ball Screw Nut and mounting the Support Unit on the base

- 1) Insert the Ball Screw Nut into the table or Bracket, which is attached to the table, and loosely tighten.
- 2) Loosely secure the fixed end Support Unit to the base.
Note 1) Move the table toward the Support Unit and center it.
Adjust to ensure that the table moves smoothly.



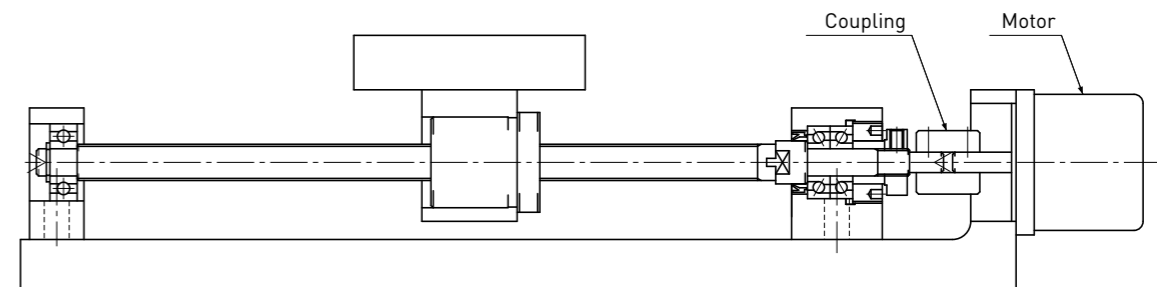
3. Mounting the supported end Housing on the base and checking accuracy

- 1) Move the table toward the supported end Housing and center it. Move the table in both directions and adjust to ensure smooth movement over entire length. Secure loosely to the base.
- 2) Check the Run-out and Axial gap at the Ball Screw Shaft end using a dial gauge, and fully tighten the Nut, fixed end Support Unit and supported end Housing.



4. Connecting to the Motor

- 1) Secure the Motor to the main Unit.
- 2) Connect the Motor to the Ball Screw using the coupling.
- 3) Run in thoroughly.



Note) Instruction above is for Pillow type and Block type Support Units, In case of Flange type Support Units, the same procedure can be applicable.