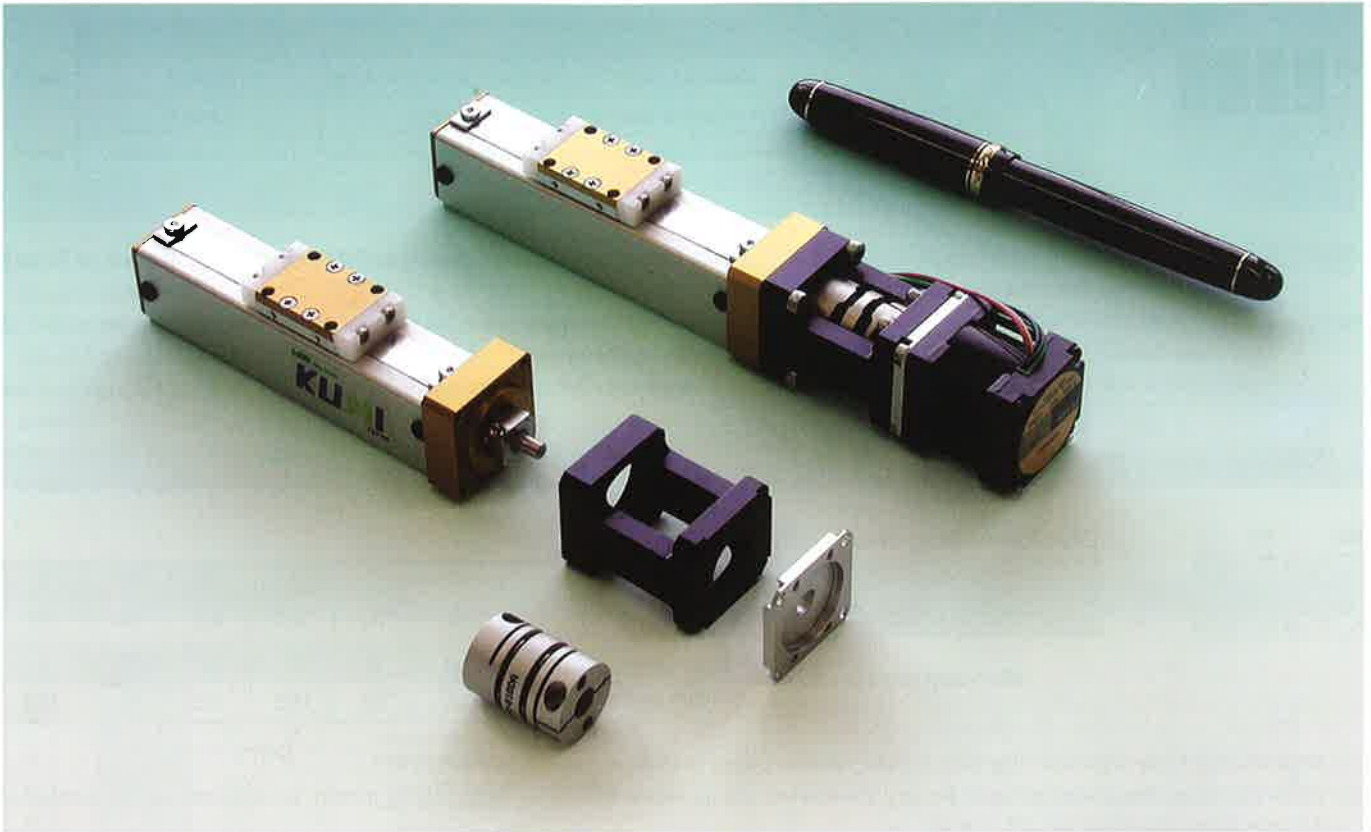


Free Selection Motors of Standard Actuator

KUMI-ML

KUMIKO-ML

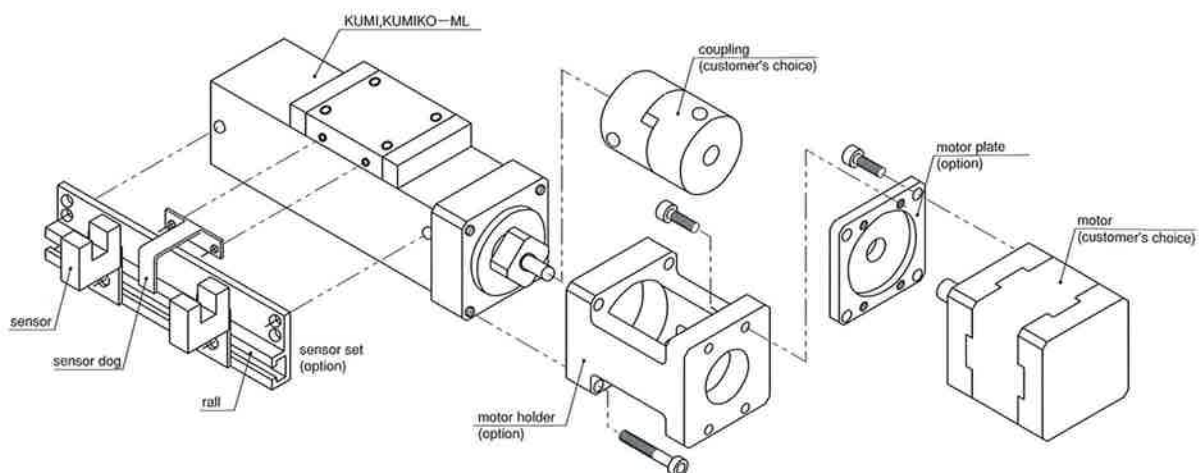
Motor Free Type



Features

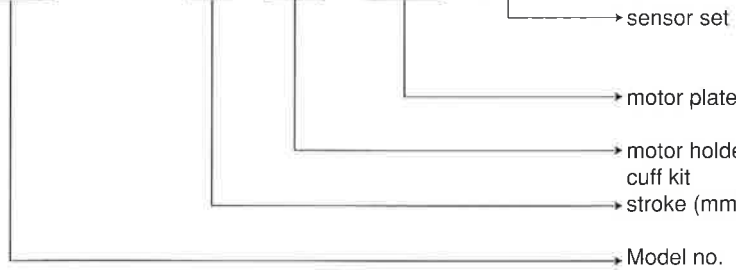
- Based on KUMI and KUMIKO series, fitted to various motors for various requirements.
- Meet to various control making it easy to use.
- Parts for various motors, and sensors (option) are available. Free combination.
- Compact size with light weight.

System diagram



Description

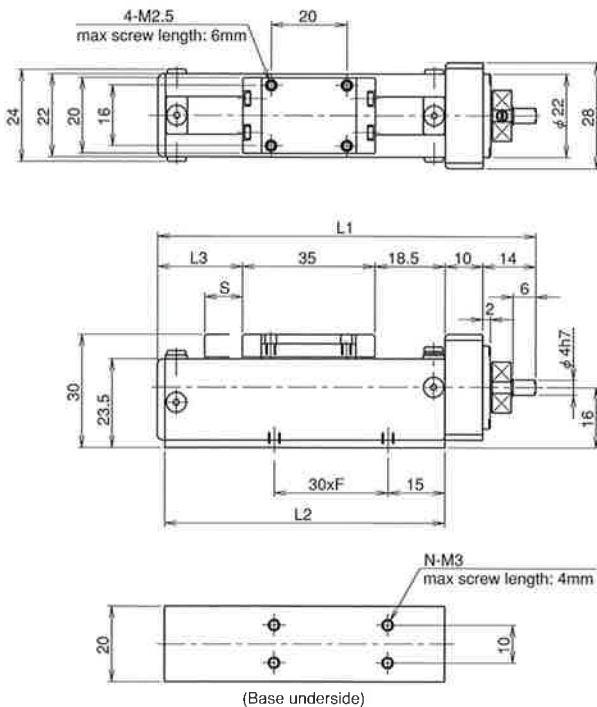
KUMI-ML-10-MH-MP1-SE M10



KUMI→M10,M30,M60
 KUMIKO→K40,K60,K120,K200
 No sign→No sensor
 MP1,MP2,MP3,MP4,MP5
 No sign→No motor plate
 No sign→No motor holder
 No sign→No cuff kit
 KUMI 10,30,60
 KUMIKO 40,60,120,200
 KUMI, KUMIKO

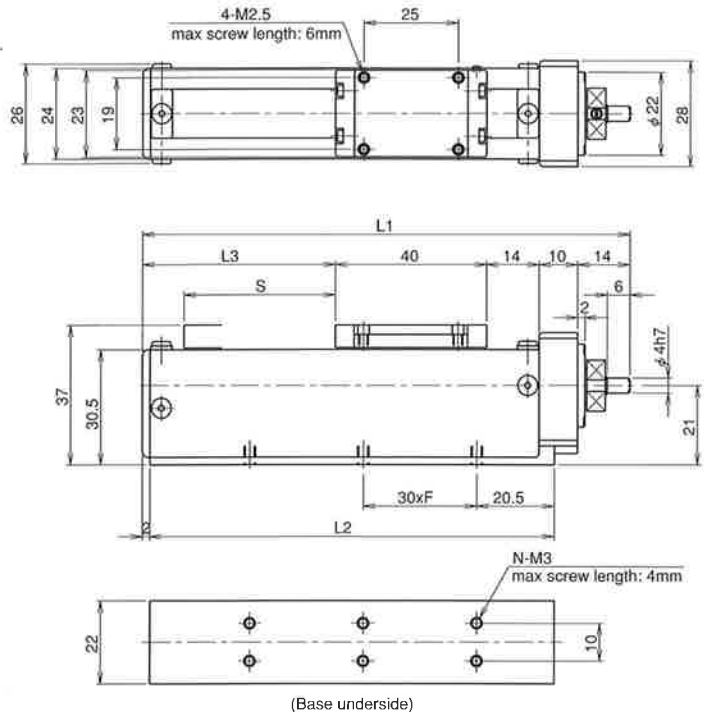
Specification diagram

KUMI-ML



	L1	L2	L3	S	F	N
KUMI ML- 10	100	74	22.5	10	1	4
KUMI ML- 30	120	94	42.5	30	2	6
KUMI ML- 60	150	124	72.5	60	3	8

KUMIKO-ML



	L1	L2	L3	S	F	N
KUMIKO ML- 40	129	107	51	40	2	6
KUMIKO ML- 60	149	127	71	60	3	8
KUMIKO ML-120	209	187	131	120	5	12
KUMIKO ML-200	289	267	211	200	7	16

Specifications

Model	Unit	KUMI-ML	KUMIKO-ML
Stroke	(mm)	10, 30, 60	40, 60, 120, 200
Repeated positioning accuracy	(mm)	±0.03	±0.01
Maximum horizontal load capacity	N (kgf)	9.8 (1.0) *1	39.2 (4.0) *1
Maximum vertical load capacity	N (kgf)	4.9 (0.5) *1	19.6 (2.0) *1
Maximum load moment *2	N · m (kgf · cm)	MP: 0.2 (2.0) My: 0.3 (2.9) Mr: 0.14 (1.4)	MP: 0.5 (5.0) My: 0.5 (5) Mr: 1.0 (10)
Drive system		Resin lead screw : lead 6mm	Precision rolled ball screw : lead 4mm
Initial lost motion	(mm)	0.1 max	0.01 max
Operating temperature range	(°C)	0 ~ 40	0 ~ 40

*1: Other than 5 phase stepping motor (PMM33B2) will be different depending on the selection of Motor.

*2: Maximum load moments - Mp: Permissible moment in screw pitch direction; My: Permissible yaw moment; Mr: Permissible rolling moment

* Refer to the 22-24 pages for the accessories of KUMI-ML and KUMIKO-ML.