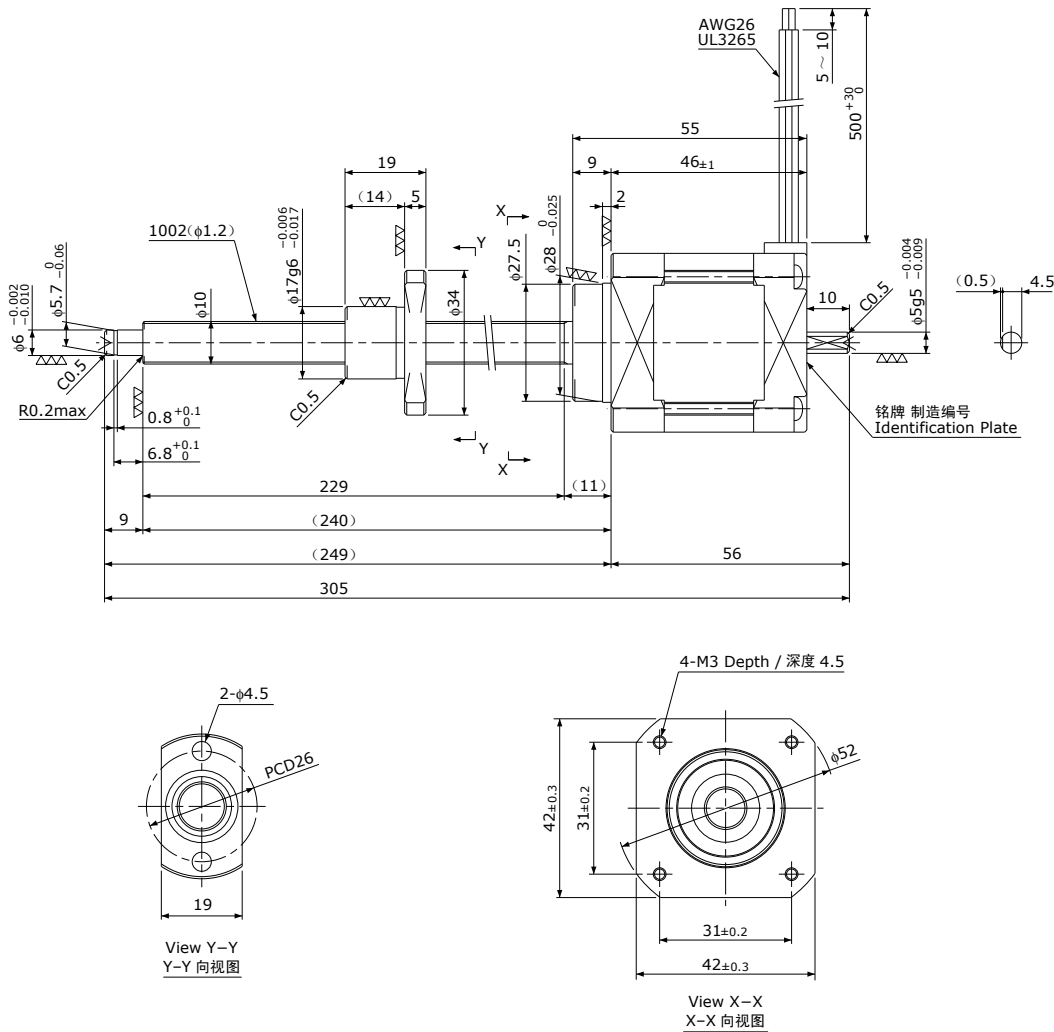


精密滚珠丝杠+5相步进电机 / Precision Ball Screw + 5-phase Stepping Motor

# MB1002

Shaft dia.(轴径)φ10 Lead(导程)2mm  
Travel(行程)200mm



|                               |                                    |
|-------------------------------|------------------------------------|
| Recommended Drivers<br>推荐的驱动器 | KR-A5CC                            |
|                               | KR-A55MC(Micro step)               |
|                               | KR-A535M(Micro step / AC-100~220V) |

注) 只能裁切轴端。  
其他轴端形状为定制产品。  
Note) Only shaft end cutting is available.  
Other than that, it would be customized order.

|                                  |                                      |                  |
|----------------------------------|--------------------------------------|------------------|
| Recommended accessories<br>推荐的配件 | Motor side Supporting plate / 电机侧支架板 | MP-42A or MP-42B |
|                                  | Supported side Bracket / 支撑侧托架       | SP-42            |
|                                  | Nut Block / 螺母块                      | NB-1002          |

| Ball Screw Specifications 主要技术参数 |  |
|----------------------------------|--|
| Accuracy grade<br>精度等级           | JIS C3   |
| Thread direction<br>旋向           | Right 右  |
| Axial play<br>轴向间隙               | 0mm  |
| Reference Thrust<br>参考推力         | 300N   |
| Shaft material<br>丝杠轴材质          | Stainless steel<br>不锈钢                           |
| Nut material<br>螺母材质             | Chrome-molybdenum steel<br>铬钼钢                   |
| Surface hardness<br>螺纹部表面硬度      | Min. HRC55<br>(Thread area)                      |
| Lubricant<br>润滑剂                 | KSS original grease MSG No.1<br>KSS原装油脂 MSG No.1 |

| Motor Specifications 电机参数       |                        |
|---------------------------------|------------------------|
| Basic step angle<br>基本步进角       | 0.72°                  |
| Rated Voltage<br>额定电压           | DC 1.65 V              |
| Rated current<br>额定电流           | 0.75A/phase<br>0.75A/相 |
| Winding resistance<br>绕组电阻      | 2.2Ω                   |
| Holding Torque<br>保持扭矩          | 0.236Nm                |
| Rotor inertia<br>转子惯量           | 86g·cm <sup>2</sup>    |
| Operating temperature<br>使用温度范围 | -20°C~50°C             |