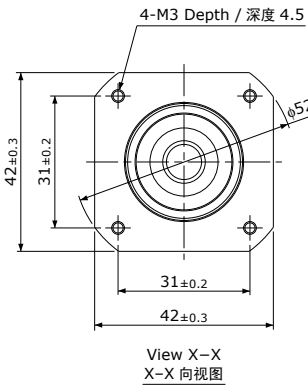
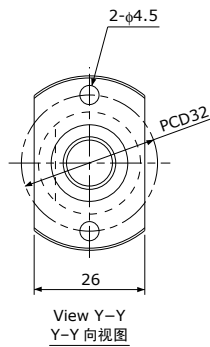
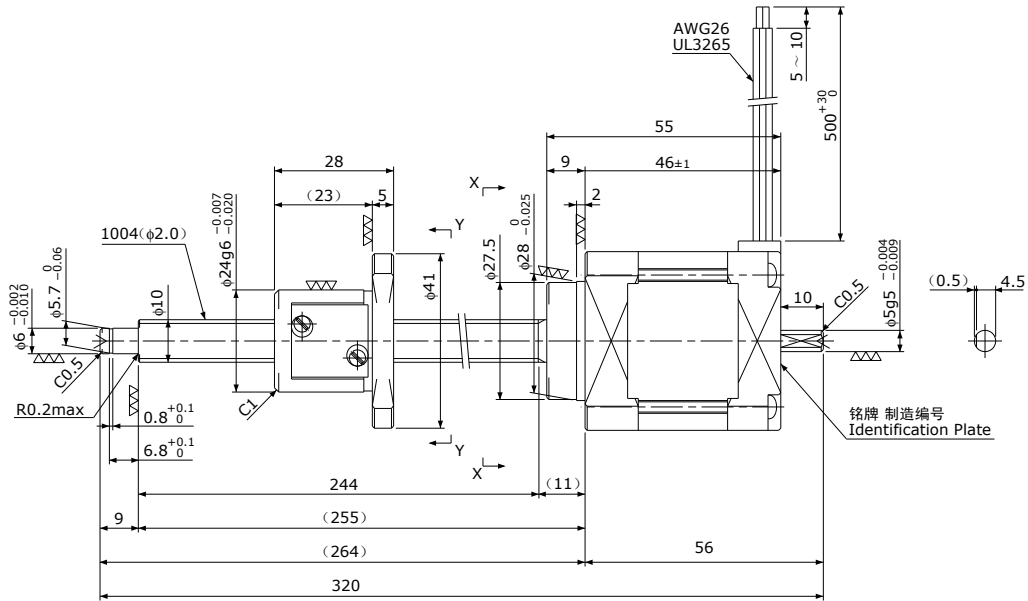


精密滚珠丝杠+5相步进电机 / Precision Ball Screw + 5-phase Stepping Motor

MB1004

Shaft dia.(轴径) $\phi 10$ Lead(导程)4mm
Travel(行程)200mm



| | |
|-------------------------------|------------------------------------|
| Recommended Drivers 推荐的驱动器 | KR-A5CC |
| | KR-A55MC(Micro step) |
| | KR-A535M(Micro step / AC-100~220V) |

注) 只能裁切轴端。
其他轴端形状为定制产品。
Note) Only shaft end cutting is available.
Other than that, it would be customized order.

| | | |
|----------------------------------|--------------------------------------|------------------|
| Recommended accessories 推荐的配件 | Motor side Supporting plate / 电机侧支架板 | MP-42A or MP-42B |
| | Supported side Bracket / 支撑侧托架 | SP-42 |
| | Nut Block / 螺母块 | NB-1004 |

| Ball Screw Specifications 主要技术参数 | |
|----------------------------------|--|
| Accuracy grade 精度等级 | JIS C3 |
| Thread direction 旋向 | Right 右 |
| Axial play 轴向间隙 | 0mm |
| Reference Thrust 参考推力 | 150N |
| Shaft material 丝杠轴材质 | Stainless steel 不锈钢 |
| Nut material 螺母材质 | Chrome-molybdenum steel 铬钼钢 |
| Surface hardness 螺纹部表面硬度 | Min. HRC55 (Thread area) |
| Lubricant 润滑剂 | KSS original grease MSG No.1 KSS原装油脂 MSG No.1 |

| Motor Specifications 电机参数 | |
|---------------------------------|------------------------|
| Basic step angle 基本步进角 | 0.72° |
| Rated Voltage 额定电压 | DC 1.65 V |
| Rated current 额定电流 | 0.75A/phase 0.75A/相 |
| Winding resistance 绕组电阻 | 2.2Ω |
| Holding Torque 保持扭矩 | 0.236Nm |
| Rotor inertia 转子惯量 | 87g·cm ² |
| Operating temperature 使用温度范围 | -20°C~50°C |