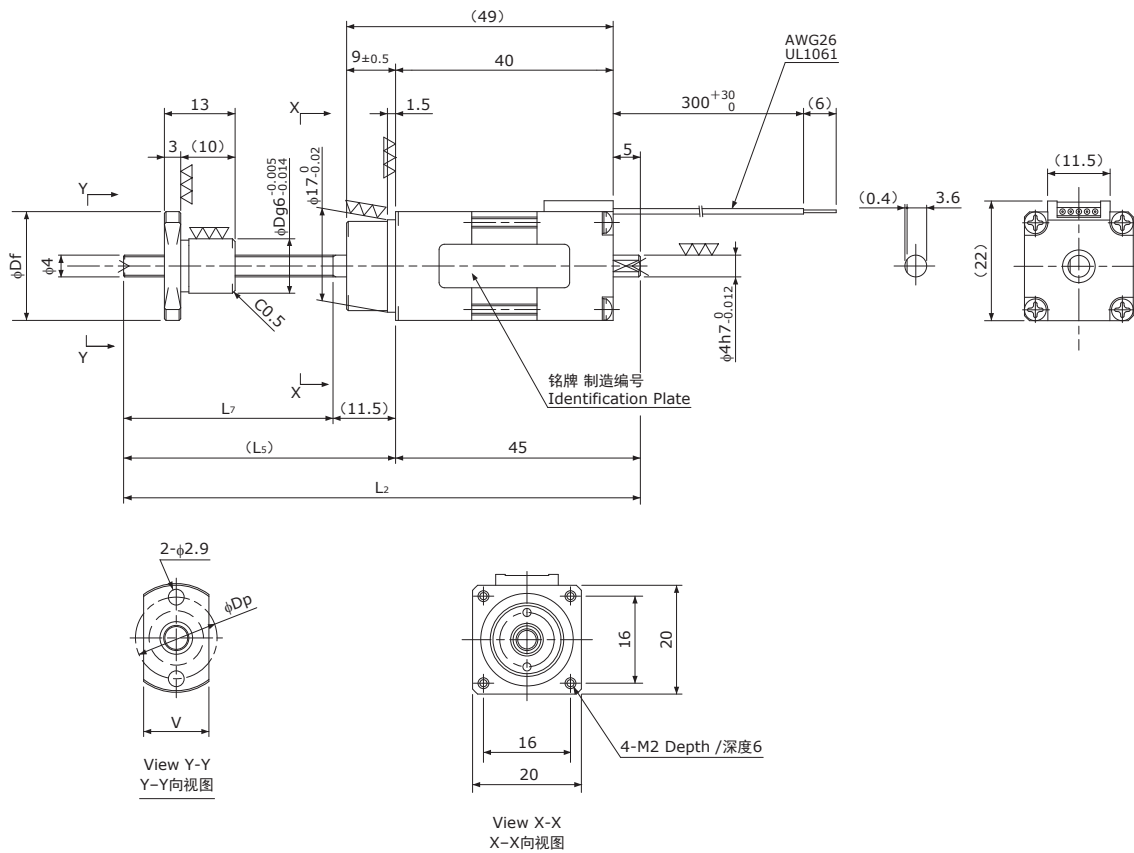


MB □20 / NEMA 08

Shaft dia. (轴径) f4



Unit(单位):mm

Model 型号	Lead 导程	Travel 行程	Reference Thrust 参考推力 (N)	L ₂	L ₅	L ₇	D	Df	V	Dp	Mass 质量 (g)
MB04005A	0.5	20	10	95	50	38.5	10	20	12	15	84
MB0401A	1	30	20	105	60	48.5	9	19	11	14	84

Recommended Drivers 推荐驱动器	KR-A5CC KR-A55MC(Micro step) KR-A535M(Micro step / AC-100~220V)
------------------------------	---

Note) Refer to page P162 or P163 for connection diagram of recommended Drivers.

注) 有关与推荐驱动器的接线, 请参照P162或P163页。

Ball Screw Specifications	滚珠丝杠主要技术参数
Accuracy grade 精度等级	JIS C3
Thread direction 旋向	Right 右
Axial play 轴向间隙	MB04005A:0.005mm or less MB0401A:0mm
Shaft material 丝杠轴材质	Stainless steel 不锈钢
Nut material 螺母材质	Chrome-molybdenum steel 铬钼钢
Surface hardness 螺纹部表面硬度	Min. HRC55 (Thread area)
Lubricant 润滑剂	KSS original grease MSG No.1 KSS原装油脂 MSG No.1

Motor Specifications	电机参数
Basic step angle 基本步进角	0.72°
Rated Voltage 额定电压	DC 1.05 V
Rated current 额定电流	DC 0.75 A/phase DC 0.75 A/相
Winding resistance 绕组电阻	1.4Ω
Holding Torque 保持扭矩	0.010Nm
Rotor inertia 转子惯量	3.9g·cm ²
Operating temperature 使用温度范围	-20°C~50°C

Note) Only shaft end cutting is available.

Other than that, it would be customized order.

注) 只能裁切轴端。
其他轴端形状为定制产品。