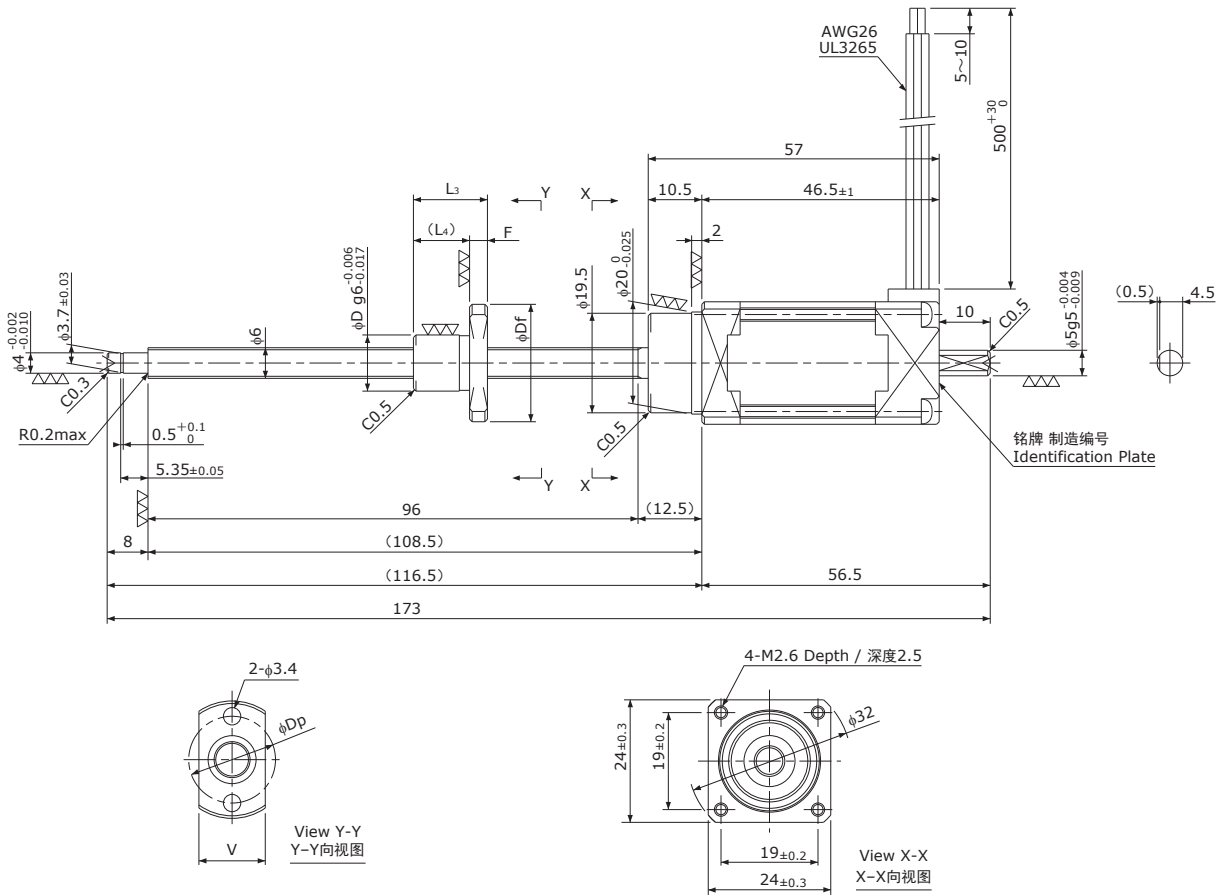


# MB □24 / NEMA 10

Shaft dia. (轴径) f6



Unit(单位):mm

| Model<br>型号 | Lead<br>导程 | Travel<br>行程 | Reference<br>Thrust<br>参考推力<br>(N) | D  | Df | F   | L <sub>3</sub> | L <sub>4</sub> | V  | Dp | Mass<br>质量<br>(g) |
|-------------|------------|--------------|------------------------------------|----|----|-----|----------------|----------------|----|----|-------------------|
| MB0601      | 1          | 75           | 100                                | 11 | 23 | 3.5 | 14.5           | 11             | 13 | 17 | 170               |
| MB0602      | 2          | 75           | 50                                 | 15 | 28 | 4   | 17             | 13             | 17 | 22 | 180               |

|                              |                                    |
|------------------------------|------------------------------------|
| Recommended Drivers<br>推荐驱动器 | KR-A5CC                            |
|                              | KR-A55MC(Micro step)               |
|                              | KR-A535M(Micro step / AC-100~220V) |

Note) Refer to page P162 or P163 for connection diagram of recommended Drivers.

注) 有关与推荐驱动器的接线, 请参照P162或P163页。

| Ball Screw Specifications   | 滚珠丝杠主要技术参数                                       |
|-----------------------------|--|
| Accuracy grade<br>精度等级      | JIS C3   |
| Thread direction<br>旋向      | Right 右  |
| Axial play<br>轴向间隙          | 0mm  |
| Shaft material<br>丝杠轴材质     | Stainless steel<br>不锈钢                           |
| Nut material<br>螺母材质        | Chrome-molybdenum steel<br>铬钼钢                   |
| Surface hardness<br>螺纹部表面硬度 | Min. HRC55<br>(Thread area)                      |
| Lubricant<br>润滑剂            | KSS original grease MSG No.1<br>KSS原装油脂 MSG No.1 |

| Motor Specifications            | 电机参数                           |
|---------------------------------|--------------------------------|
| Basic step angle<br>基本步进角       | 0.72°                          |
| Rated Voltage<br>额定电压           | DC 1.28 V                      |
| Rated current<br>额定电流           | DC 0.75 A/phase<br>DC 0.75 A/相 |
| Winding resistance<br>绕组电阻      | 1.7Ω                           |
| Holding Torque<br>保持扭矩          | 0.028Nm                        |
| Rotor inertia<br>转子惯量           | 8.9g·cm <sup>2</sup>           |
| Operating temperature<br>使用温度范围 | -20°C~50°C                     |

Note) Only shaft end cutting is available.

Other than that, it would be customized order.

注) 只能裁切轴端。  
其他轴端形状为定制产品。