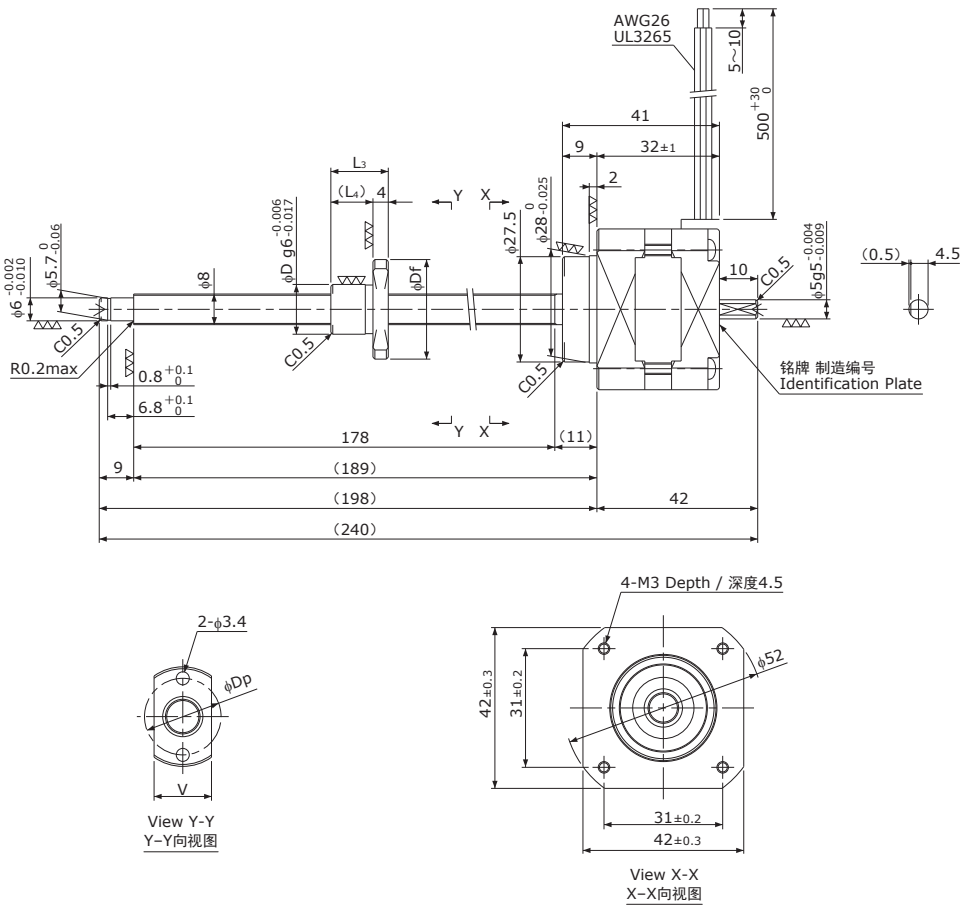


精密滚珠丝杠+5相步进电机 / Precision Ball Screw + 5-Phase Stepping Motor

MB □42 / NEMA 17

Shaft dia. (轴径) f8



Unit(单位):mm

Model 型号	Lead 导程	Travel 行程	Reference Thrust 参考推力 (N)	D	Df	L ₃	L ₄	V	Dp	Mass 质量 (g)
MB0801	1	150	300	13	26	15	11	15	20	310
MB0802	2	150	150	15	28	18	14	17	22	320

Recommended Drivers 推荐驱动器	KR-A5CC KR-A55MC(Micro step) KR-A535M(Micro step / AC-100~220V)
------------------------------	---

Note) Refer to page P162 or P163 for connection diagram of recommended Drivers.

注) 有关与推荐驱动器的接线, 请参照P162或P163页。

Ball Screw Specifications	滚珠丝杠主要技术参数
Accuracy grade 精度等级	JIS C3
Thread direction 旋向	Right 右
Axial play 轴向间隙	0mm
Shaft material 丝杠轴材质	Stainless steel 不锈钢
Nut material 螺母材质	Chrome-molybdenum steel 铬钼钢
Surface hardness 螺纹部表面硬度	Min. HRC55 (Thread area)
Lubricant 润滑剂	KSS original grease MSG No.1 KSS原装油脂 MSG No.1

Motor Specifications	电机参数
Basic step angle 基本步角	0.72°
Rated Voltage 额定电压	DC 1.28 V
Rated current 额定电流	DC 0.75 A/phase DC 0.75 A/相
Winding resistance 绕组电阻	1.7Ω
Holding Torque 保持扭矩	0.128Nm
Rotor inertia 转子惯量	41g·cm ²
Operating temperature 使用温度范围	-20°C~50°C

Note) Only shaft end cutting is available.

Other than that, it would be customized order.

注) 只能裁切轴端。
其他轴端形状为定制产品。