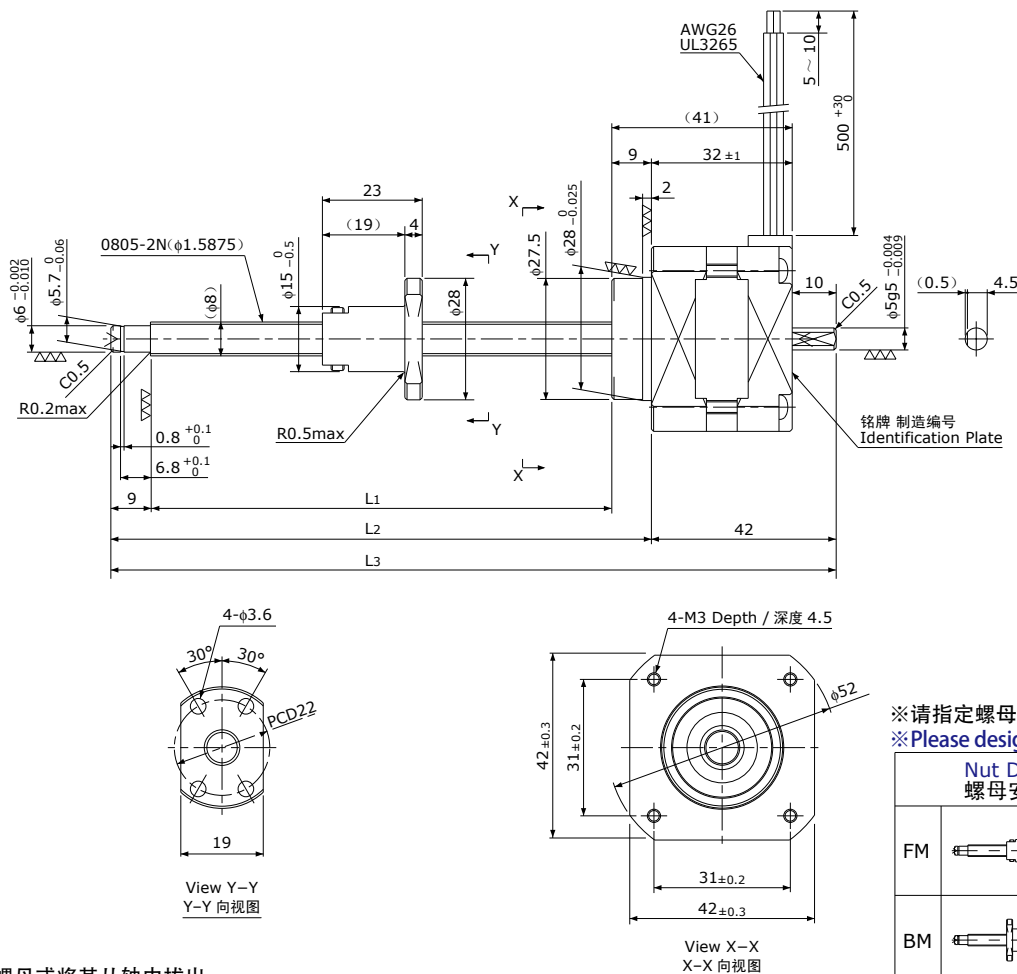


树脂导程丝杠+2相步进电机 / Resin Lead Screw + 2-phase Stepping Motor

# RM0805BP2

Shaft dia. (轴径)  $\square 8$  Lead (导程) 5mm  
Backlash free type (无齿侧间隙型)



注) 请勿拆分螺母或将其从轴中拔出。

Note) Plastic Nut (back-lash free type) should not be disassembled or pulled out from Shaft.

Model 型号	Travel 行程 (mm)	Shaft Length 螺纹部长度 (mm)			Mass 重量 (g)	Rotor inertia 转子惯量 (g · cm <sup>2</sup> )	Recommended accessories 推荐的配件	Recommended Drivers 推荐的驱动器
		L <sub>1</sub>	L <sub>2</sub>	L <sub>3</sub>				
RM0805BP2-050FM/BM	50	90	108	150	250	38	Motor side Supporting plate 电机侧支架板 MP-42A or MP-42B  Supported side Bracket 支撑侧托架 SP-42	KS9110 SD4030B (Micro Step)
RM0805BP2-100FM/BM	100	140	158	200	270	40		
RM0805BP2-150FM/BM	150	190	208	250	290	41		
RM0805BP2-200FM/BM	200	240	258	300	310	43		
RM0805BP2-300FM/BM	300	340	358	400	350	46		

Lead Screw Specifications 主要技术参数	
Accuracy grade 精度等级	Equivalent to JIS Ct10 相当于Ct10
Thread direction 旋向	Right 右
Axial play 轴向间隙	0mm
Reference Thrust 参考推力	100N
Shaft material 丝杠轴材质	Stainless steel 不锈钢
Nut material 螺母材质	MC nylon (Nippon Polypenco) MC尼龙(日本POLYPENCO公司)
Surface hardness 螺纹部表面硬度	—
Lubricant 润滑剂	—

Motor Specifications 电机参数	
Basic step angle 基本步进角	1.8°
Driving method 励磁方式	2-phase Uni-polar 2相单极方式
Rated Voltage 额定电压	DC 4.0V
Rated current 额定电流	0.95A/phase 0.95A/相
Winding resistance 绕组电阻	3.3Ω
Holding Torque 保持扭矩	0.16Nm
Rotor inertia 转子惯量	See table above 参照上表
Operating temperature 使用温度范围	-20° C ~ 50° C