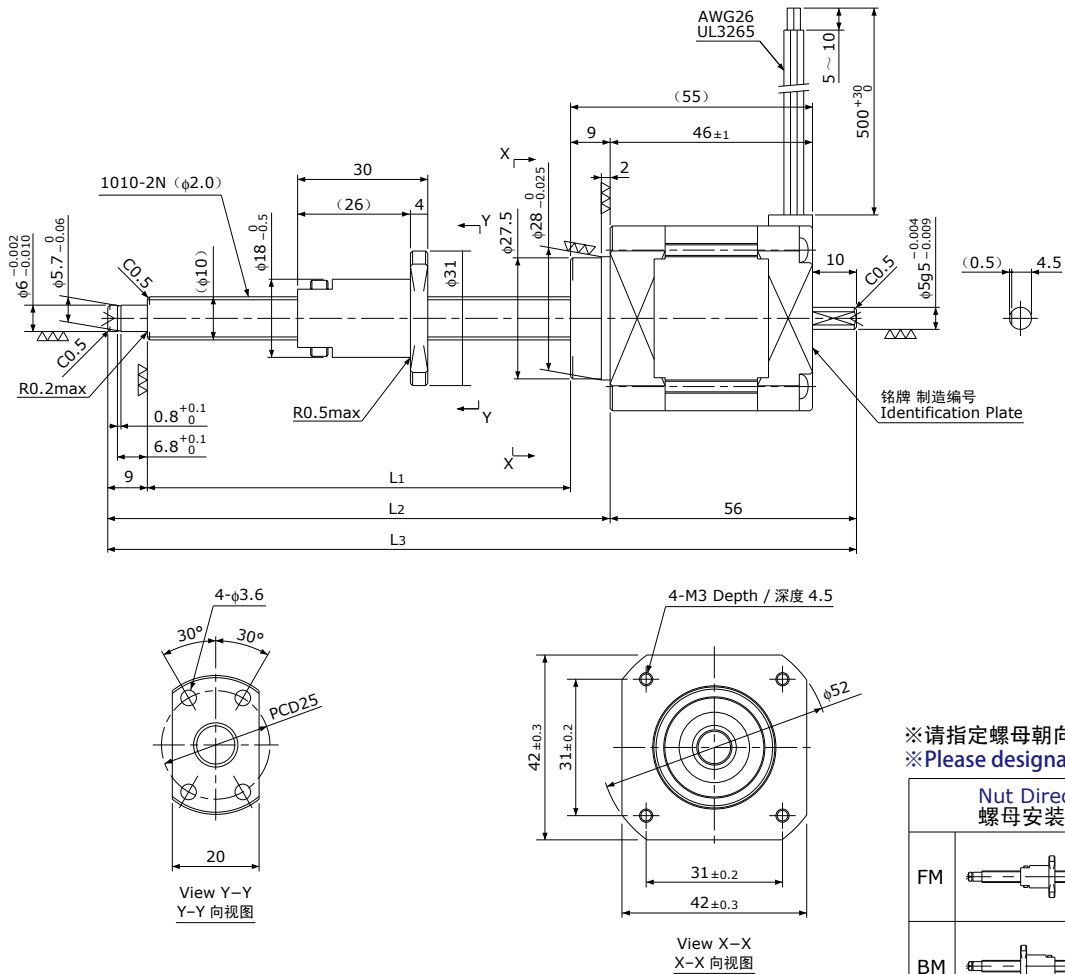


树脂导程丝杠+2相步进电机 / Resin Lead Screw + 2-phase Stepping Motor

RM1010BP2 Shaft dia.(轴径) $\square 10$ Lead(导程) 10mm Backlash free type (无齿侧间隙型)



注) 请勿拆分螺母或将其从轴中拔出。

Note) Plastic Nut (back-lash free type) should not be disassembled or pulled out from Shaft.

Model 型号	Travel 行程 (mm)	Shaft Length 螺纹部长度 (mm)			Mass 重量 (g)	Rotor inertia 转子惯量 (g · cm ²)	Recommended accessories 推荐的配件	Recommended Drivers 推荐的驱动器
		L ₁	L ₂	L ₃				
RM1010BP2-100FM/BM	100	146	164	220	450	79	Motor side Supporting plate 电机侧支架板 MP-42A or MP-42B	KS9110 SD4030B (Micro Step)
RM1010BP2-150FM/BM	150	196	214	270	480	83		
RM1010BP2-200FM/BM	200	246	264	320	510	87	Supported side Bracket 支撑侧托架 SP-42	
RM1010BP2-300FM/BM	300	346	364	420	570	95		

Lead Screw Specifications 主要技术参数	
Accuracy grade 精度等级	Equivalent to JIS Ct10 相当于Ct10
Thread direction 旋向	Right 右
Axial play 轴向间隙	0mm
Reference Thrust 参考推力	100N
Shaft material 丝杠轴材质	Stainless steel 不锈钢
Nut material 螺母材质	MC nylon (Nippon Polypenco) MC尼龙(日本POLYPENCO公司)
Surface hardness 螺纹部表面硬度	—
Lubricant 润滑剂	—

Motor Specifications 电机参数	
Basic step angle 基本步进角	1.8°
Driving method 励磁方式	2-phase Uni-polar 2相单极方式
Rated Voltage 额定电压	DC 4.0 V
Rated current 额定电流	1.2A/phase 1.2A/相
Winding resistance 绕组电阻	3.3Ω
Holding Torque 保持扭矩	0.32Nm
Rotor inertia 转子惯量	See table above 参照上表
Operating temperature 使用温度范围	-20° C ~ 50° C