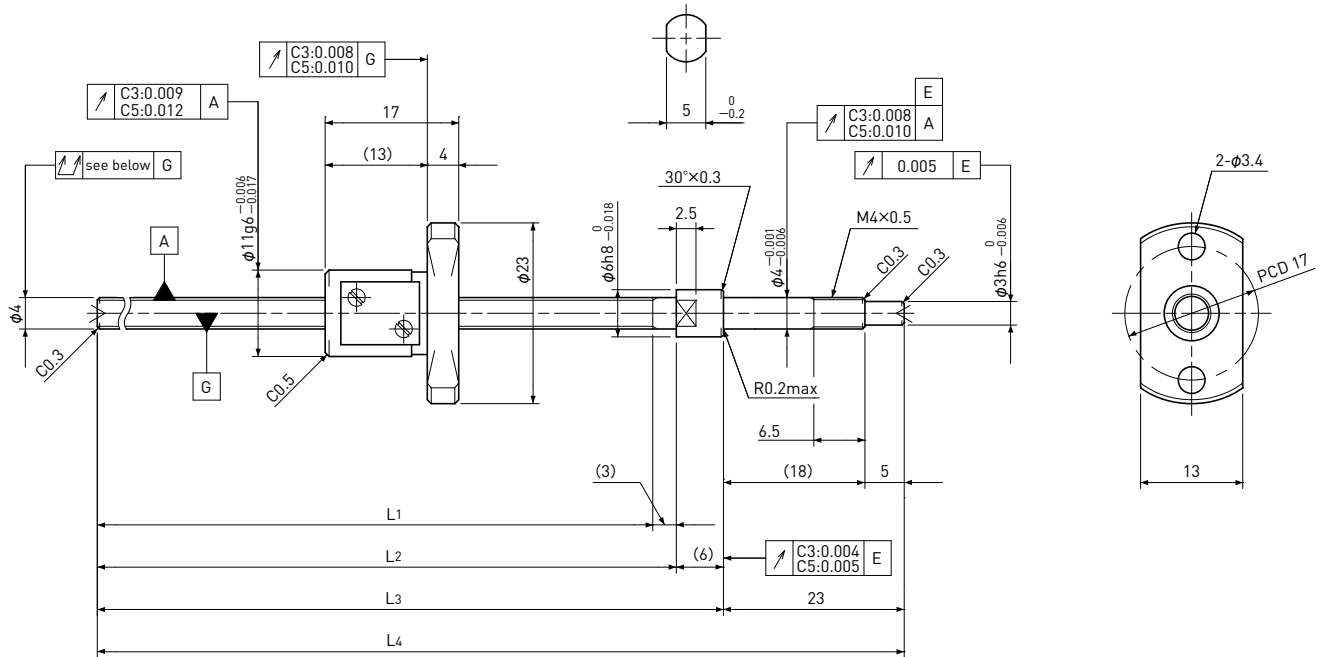


# SG0401

Shaft dia.  $\phi 4$  Lead 1mm

# C3&C5



Unit: mm

Ball Screw Specifications	
Ball size	$\phi 0.8$
Number of thread	1
Thread direction	Right
Shaft root dia.	$\phi 3.3$
Number of circuit	$3.7 \times 1$
Shaft, Nut material	SCM415H
Surface hardness	HRC58~62 (Thread area)
Anti-rust treatment	Anti-rust oil

Supported-side end-journal profile		
A-type	B-type	C-type
L5: Thread length after end-journal machining. L6: Total length after end-journal machining.		
Support-unit Recommendation	Supported-side : MSU-4CS/4GS	Fixed-side : MSU-4C/4G
D-type : Other than the above.		

Unit: mm

Ball Screw Model	Travel	Grade	Shaft length				Lead accuracy		Total Run-out	Axial play	Preload Torque Nm	Basic Load Rating N	
			L <sub>1</sub>	L <sub>2</sub>	L <sub>3</sub>	L <sub>4</sub>	Travel deviation $e_p$	Variation $V_u$				Dynamic $C_a$	Static $C_oa$
SG0401-063R095C3	45	C3	63	66	72	95	$\pm 0.008$	0.008	0.025	0 Spacer Ball (1:1)	~0.004	350	400
SG0401-083R115C3	65	C3	83	86	92	115	$\pm 0.008$	0.008	0.025				
SG0401-103R135C3	85	C3	103	106	112	135	$\pm 0.010$	0.008	0.035				
SG0401-063R095C5	45	C5	63	66	72	95	$\pm 0.018$	0.018	0.035	~0.005	—	560	790
SG0401-083R115C5	65	C5	83	86	92	115	$\pm 0.018$	0.018	0.035				
SG0401-103R135C5	85	C5	103	106	112	135	$\pm 0.020$	0.018	0.050				

Note) Please refer to page A206 for order code of end-journal machining.