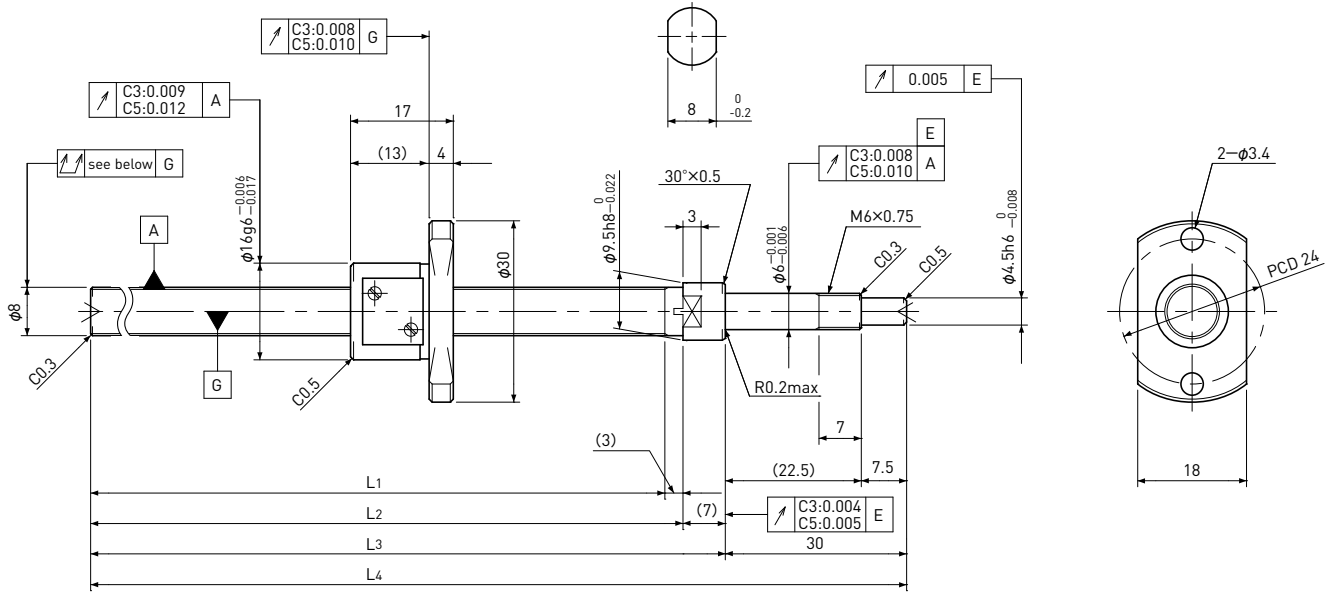


Standard products in stock SG series

SG0801

Shaft dia. $\phi 8$ Lead 1mm

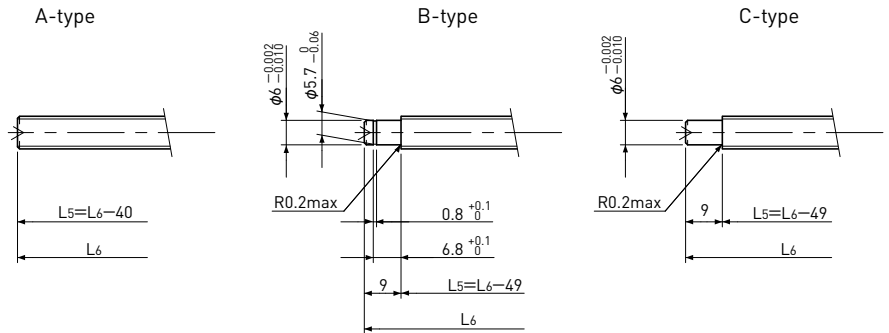
C3&C5



Unit: mm

Ball Screw Specifications	
Ball size	$\phi 0.8$
Number of thread	1
Thread direction	Right
Shaft root dia.	$\phi 7.3$
Number of circuit	3.7×1
Shaft, Nut material	SCM415H
Surface hardness	HRC58~62 (Thread area)
Anti-rust treatment	Anti-rust oil

Supported-side end-journal profile



L5: Thread length after end-journal machining.
L6: Total length after end-journal machining.

Support-unit Recommendation	Supported-side	Fixed-side
	MSU-6CS/6GS	MSU-6C/6G

D-type : Other than the above.

Unit: mm

Ball Screw Model	Travel	Grade	Shaft length				Lead accuracy		Total Run-out	Axial play	Preload Torque Nm	Basic Load Rating N	
			L ₁	L ₂	L ₃	L ₄	Travel deviation e_p	Variation V_u				Dynamic Ca	Static Coa
SG0801-100R140C3	80	C3	100	103	110	140	± 0.008	0.008	0.035	0 Spacer Ball (1:1)	0.002~ 0.008	490	820
SG0801-130R170C3	110	C3	130	133	140	170	± 0.010	0.008	0.035				
SG0801-160R200C3	140	C3	160	163	170	200	± 0.010	0.008	0.035				
SG0801-210R250C3	190	C3	210	213	220	250	± 0.012	0.008	0.050				
SG0801-100R140C5	80	C5	100	103	110	140	± 0.018	0.018	0.050	~0.005	-	780	1650
SG0801-130R170C5	110	C5	130	133	140	170	± 0.020	0.018	0.050				
SG0801-160R200C5	140	C5	160	163	170	200	± 0.020	0.018	0.050				
SG0801-210R250C5	190	C5	210	213	220	250	± 0.023	0.018	0.065				

Note) Please refer to page A206 for order code of end-journal machining.