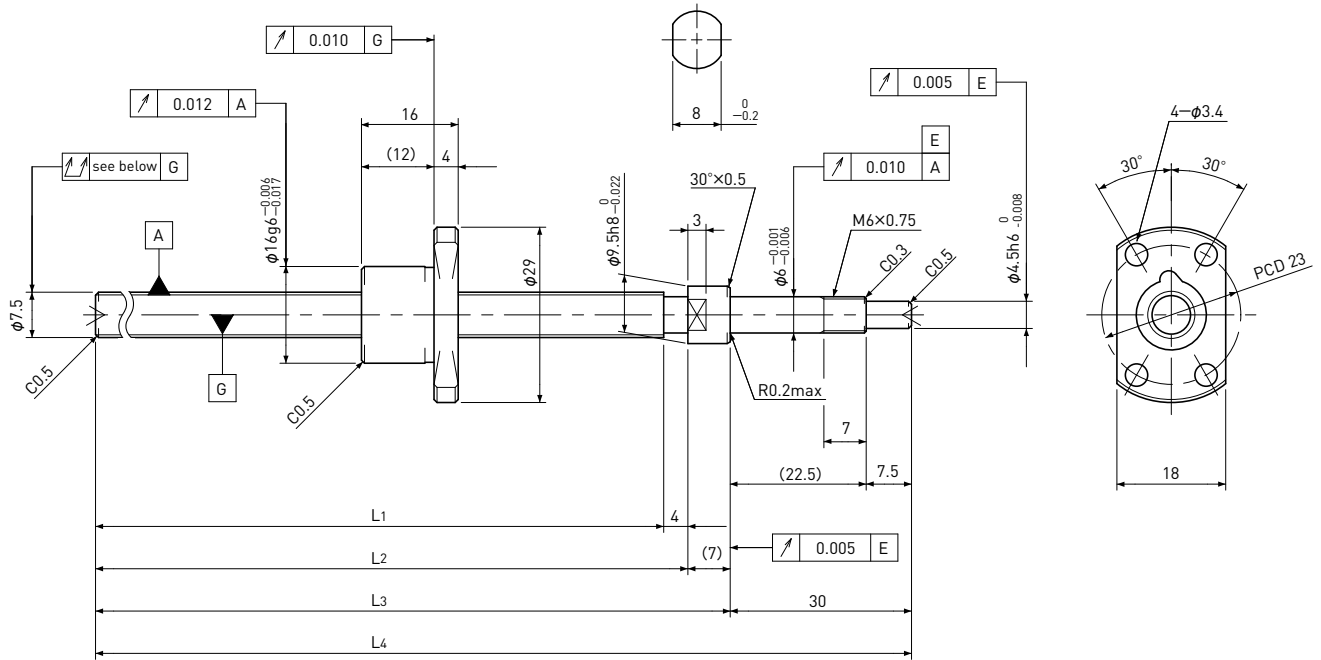


# SG0802.5

Shaft dia.  $\phi 8$  Lead 2.5mm

C5

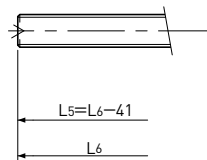


Unit: mm

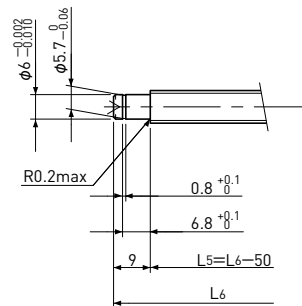
Ball Screw Specifications	
Ball size	$\phi 1.5875$
Number of thread	1
Thread direction	Right
Shaft root dia.	$\phi 6.3$
Number of circuit	$2.7 \times 1$
Shaft, Nut material	SCM415H
Surface hardness	HRC58~62 (Thread area)
Anti-rust treatment	Anti-rust oil

## Supported-side end-journal profile

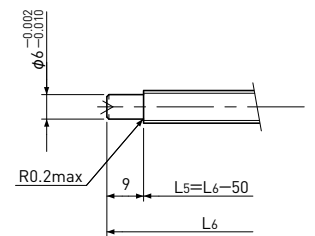
A-type



B-type



C-type



L5: Thread length after end-journal machining.  
L6: Total length after end-journal machining.

Support-unit Recommendation	Supported-side	MSU-6CS/6GS
	Fixed-side	MSU-6C/6G

D-type : Other than the above.

Unit: mm

Ball Screw Model	Travel	Grade	Shaft length				Lead accuracy		Total Run-out	Axial play	Preload Torque Nm	Basic Load Rating N	
			L <sub>1</sub>	L <sub>2</sub>	L <sub>3</sub>	L <sub>4</sub>	Travel deviation $e_p$	Variation $V_u$				Dynamic $C_a$	Static $C_{oa}$
SG0802.5-129R170C5	110	C5	129	133	140	170	$\pm 0.020$	0.018	0.050	~0.005	—	1850	3000
SG0802.5-209R250C5	190	C5	209	213	220	250	$\pm 0.023$	0.018	0.065				

Note) Please refer to page A206 for order code of end-journal machining.