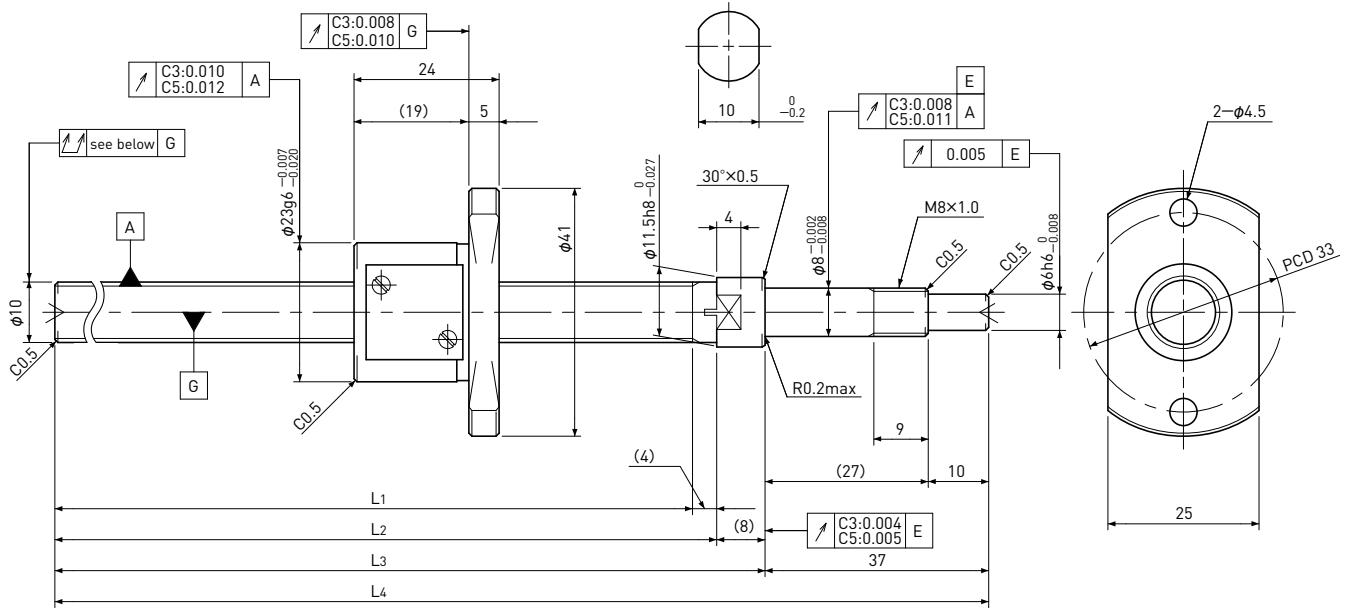


SG1002

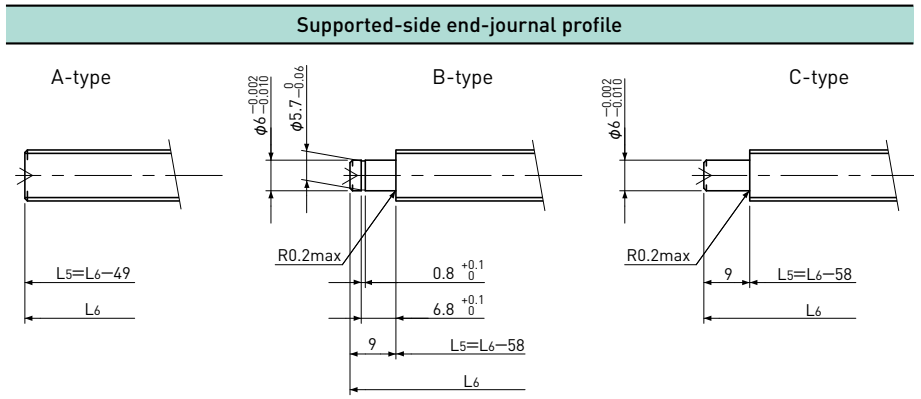
Shaft dia. $\phi 10$ Lead 2mm

C3&C5



Unit: mm

Ball Screw Specifications	
Ball size	$\phi 1.5875$
Number of thread	1
Thread direction	Right
Shaft root dia.	$\phi 8.6$
Number of circuit	3.7×1
Shaft, Nut material	SCM415H
Surface hardness	HRC58~62 (Thread area)
Anti-rust treatment	Anti-rust oil



L5: Thread length after end-journal machining.
L6: Total length after end-journal machining.

Support-unit Recommendation	Supported-side	Fixed-side
	MSU-8CS/8GS	MSU-8C/8G

D-type : Other than the above.

Unit: mm

Ball Screw Model	Travel	Grade	Shaft length				Lead accuracy		Total Run-out	Axial play	Preload Torque Nm	Basic Load Rating N	
			L ₁	L ₂	L ₃	L ₄	Travel deviation e_p	Variation V_u				Dynamic Ca	Static Coa
SG1002-111R160C3	85	C3	111	115	123	160	± 0.010	0.008	0.035	0 Spacer Ball (1:1)	0.006~ 0.030	1750	2700
SG1002-161R210C3	135	C3	161	165	173	210	± 0.010	0.008	0.040				
SG1002-211R260C3	185	C3	211	215	223	260	± 0.012	0.008	0.040				
SG1002-261R310C3	235	C3	261	265	273	310	± 0.012	0.008	0.040				
SG1002-111R160C5	85	C5	111	115	123	160	± 0.020	0.018	0.040	~0.005	-	2700	5300
SG1002-161R210C5	135	C5	161	165	173	210	± 0.020	0.018	0.055				
SG1002-211R260C5	185	C5	211	215	223	260	± 0.023	0.018	0.055				
SG1002-261R310C5	235	C5	261	265	273	310	± 0.023	0.018	0.055				

Note) Please refer to page A206 for order code of end-journal machining.