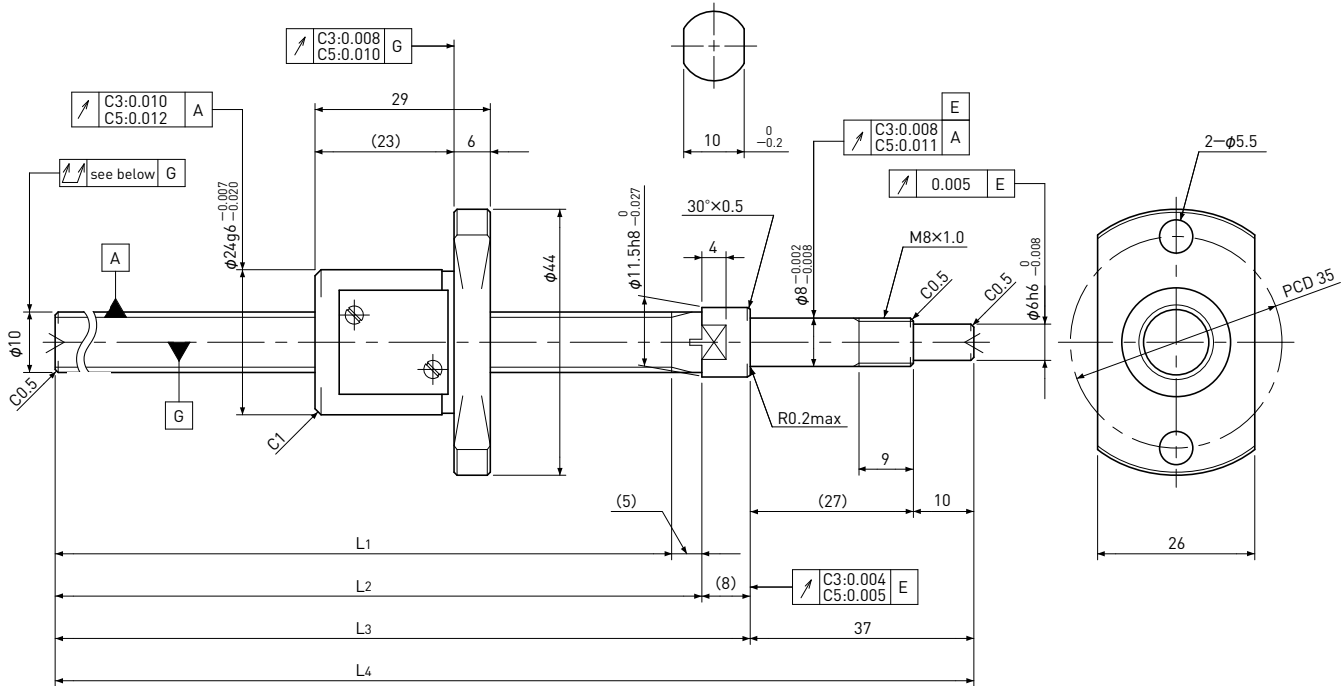


SG1004

Shaft dia. $\phi 10$ Lead 4mm

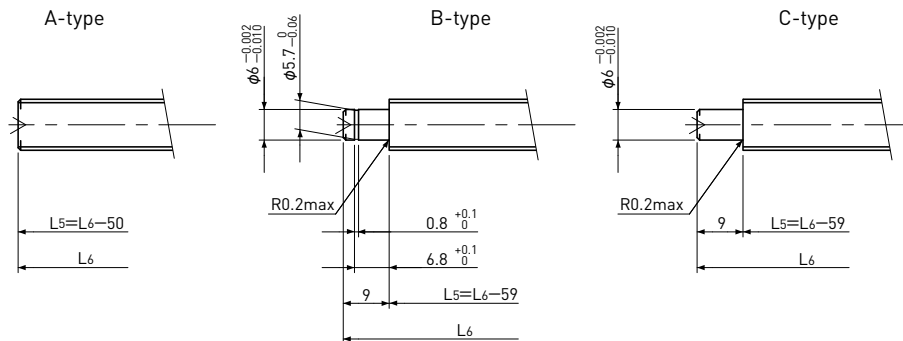
C3&C5



Unit: mm

Ball Screw Specifications	
Ball size	$\phi 2.0$
Number of thread	1
Thread direction	Right
Shaft root dia.	$\phi 8.2$
Number of circuit	2.7 × 1
Shaft, Nut material	SCM415H
Surface hardness	HRC58~62 (Thread area)
Anti-rust treatment	Anti-rust oil

Supported-side end-journal profile



L5: Thread length after end-journal machining.
L6: Total length after end-journal machining.

Support-unit Recommendation	Supported-side	Fixed-side
	MSU-8CS/8GS	MSU-8C/8G

D-type : Other than the above.

Unit: mm

Ball Screw Model	Travel	Grade	Shaft length				Lead accuracy		Total Run-out	Axial play	Preload Torque Nm	Basic Load Rating N	
			L ₁	L ₂	L ₃	L ₄	Travel deviation e _p	Variation V _u				Dynamic Ca	Static Coa
SG1004-110R160C3	80	C3	110	115	123	160	±0.010	0.008	0.035	0 Spacer Ball (1:1)	0.005~ 0.040	1800	2600
SG1004-260R310C3	230	C3	260	265	273	310	±0.012	0.008	0.040				
SG1004-110R160C5	80	C5	110	115	123	160	±0.020	0.018	0.040	~0.005	—	3000	5200
SG1004-260R310C5	230	C5	260	265	273	310	±0.023	0.018	0.055				

Note) Please refer to page A206 for order code of end-journal machining.