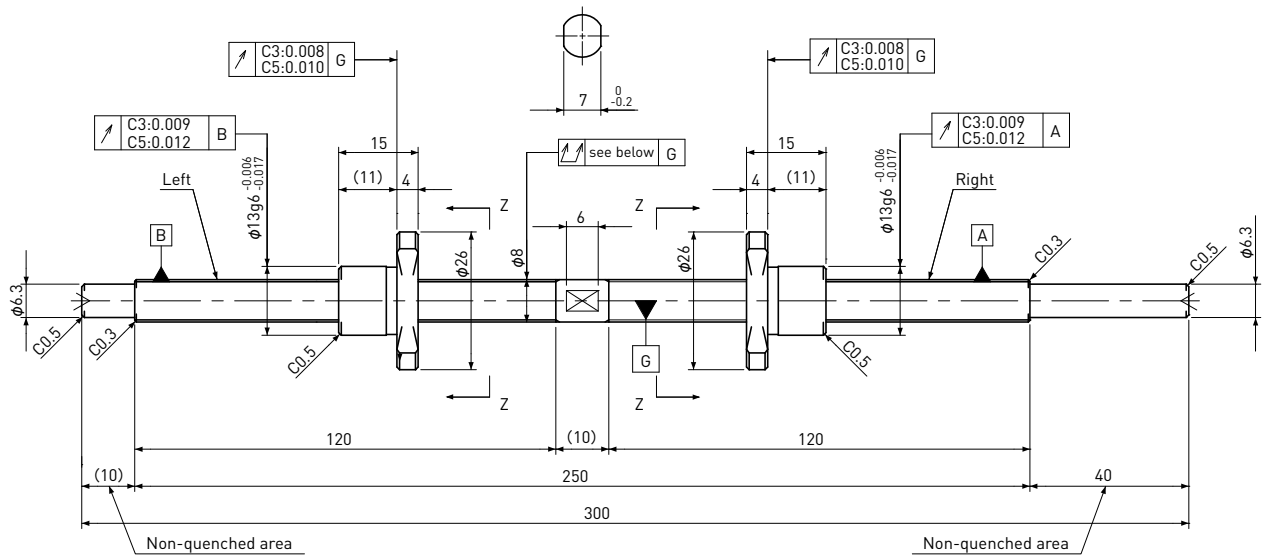
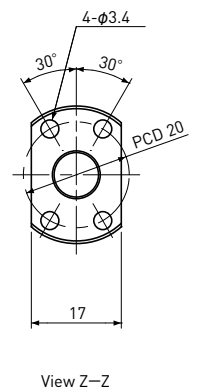


SD0801Shaft dia. $\phi 8$ Lead 1mm**C3&C5**

Unit: mm

Ball Screw Specifications	
Ball size	$\phi 0.8$
Number of thread	1
Thread direction	Left&Right
Shaft root dia.	$\phi 7.3$
Number of circuit	1×3
Shaft,Nut material	SCM415H
Surface hardness	HRC58~62 (Thread area)
Anti-rust treatment	Anti-rust oil



Unit:mm

Ball Screw Model	Travel	Grade	Lead accuracy		Total Run-out	Axial play	Preload Torque Nm	Basic Load Rating N	
			Travel deviation e_p	Variation V_u				Dynamic C_a	Static C_oa
SD0801-120L120R300C3	105	C3	± 0.010	0.008	0.050	0	~0.018	650	1300
SD0801-120L120R300C5	105	C5	± 0.020	0.018	0.065	~0.005	—		

Note 1) Please designate end-journal profile with your sketch.

Note 2) Absolute position of both Nuts related to the Screw Shaft is not under the control.