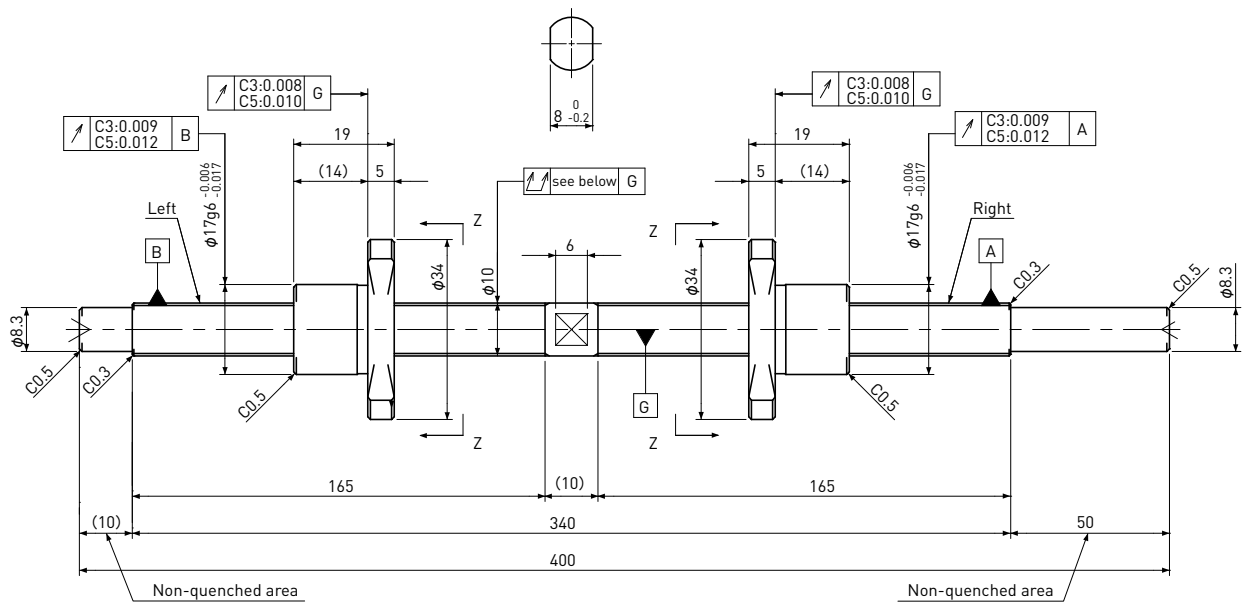
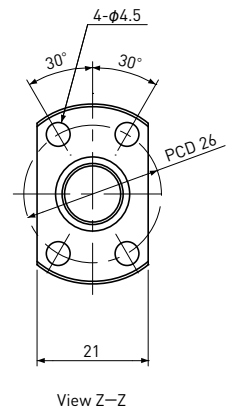


SD1002Shaft dia. $\phi 10$ Lead 2mm**C3&C5**

Unit: mm

Ball Screw Specifications	
Ball size	$\phi 1.2$
Number of thread	1
Thread direction	Left&Right
Shaft root dia.	$\phi 9.0$
Number of circuit	1×3
Shaft,Nut material	SCM415H
Surface hardness	HRC58~62 (Thread area)
Anti-rust treatment	Anti-rust oil



Unit:mm

Ball Screw Model	Travel	Grade	Lead accuracy		Total Run-out	Axial play	Preload Torque Nm	Basic Load Rating N	
			Travel deviation e_p	Variation V_u				Dynamic C_a	Static C_oa
SD1002-165L165R400C3	145	C3	± 0.010	0.008	0.050	0	~ 0.025	1450	3000
SD1002-165L165R400C5	145	C5	± 0.020	0.018	0.065	~ 0.005	—		

Note 1) Please designate end-journal profile with your sketch.

Note 2) Absolute position of both Nuts related to the Screw Shaft is not under the control.