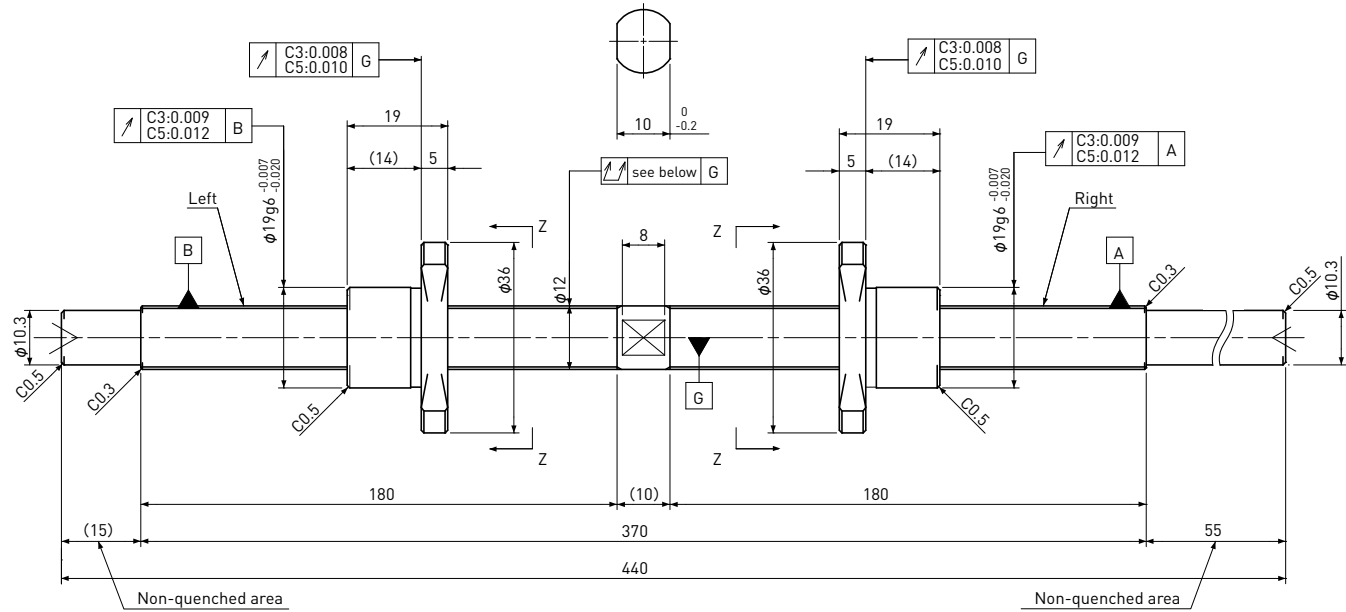


# SD1202

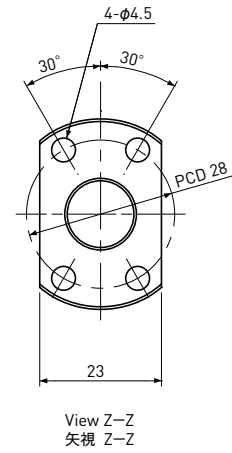
Shaft dia.  $\phi 12$  Lead 2mm

# C3&C5



Unit: mm

| Ball Screw Specifications |                           |
|---------------------------|---------------------------|
| Ball size                 | $\phi 1.2$                |
| Number of thread          | 1                         |
| Thread direction          | Left & Right              |
| Shaft root dia.           | $\phi 11.0$               |
| Number of circuit         | 1 × 3                     |
| Shaft, Nut material       | SCM415H                   |
| Surface hardness          | HRC58~62<br>(Thread area) |
| Anti-rust treatment       | Anti-rust oil             |



Unit: mm

| Ball Screw Model     | Travel | Grade | Lead accuracy          |                 | Total Run-out | Axial play | Preload Torque Nm | Basic Load Rating N |                 |
|----------------------|--------|-------|------------------------|-----------------|---------------|------------|-------------------|---------------------|-----------------|
|                      |        |       | Travel deviation $e_p$ | Variation $V_u$ |               |            |                   | Dynamic $C_a$       | Static $C_{0a}$ |
| SD1202-180L180R440C3 | 160    | C3    | $\pm 0.010$            | 0.008           | 0.065         | 0          | ~0.035            | 1600                | 3700            |
| SD1202-180L180R440C5 | 160    | C5    | $\pm 0.020$            | 0.018           | 0.080         | ~0.005     | —                 |                     |                 |

Note 1) Please designate end-journal profile with your sketch.

Note 2) Absolute position of both Nuts related to the Screw Shaft is not under the control.