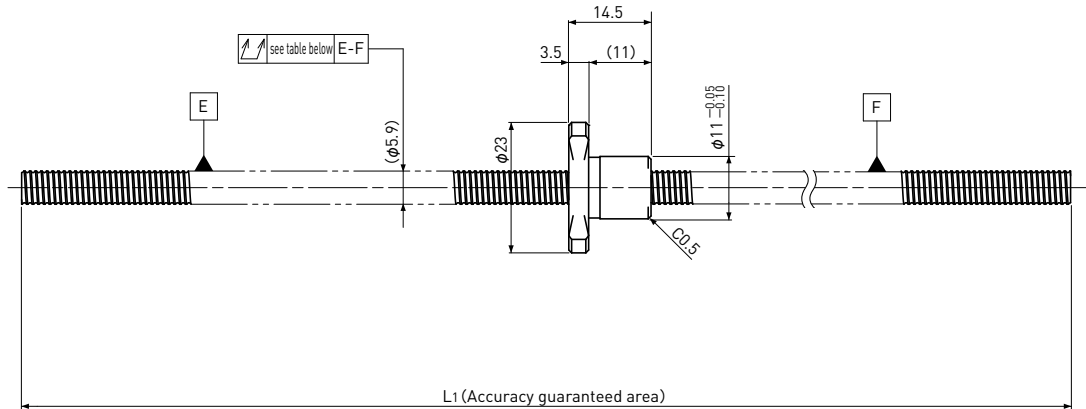
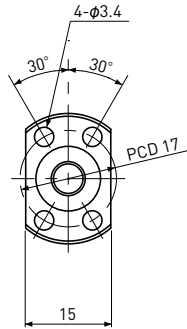


# SR0601K

Compact Nut

Shaft dia.  $\phi 6$  Lead 1mm

Ct7&Ct10



Unit: mm

Ball Screw Specifications		
Ball size	$\phi 0.8$	
Number of thread	1	
Thread direction	Right	
Shaft root dia.	$\phi 5.3$	
Number of circuit	1×3	
Material	Shaft	S55C
	Nut	SCM415H
Surface hardness	HRC58~ (Thread area)	
Anti-rust treatment	Anti-rust oil	

Unit: mm

Ball Screw Model	Travel	Grade	Shaft length		Lead accuracy		Total Run-out	Axial play	Preload Torque Nm	Basic Load Rating N	
			L <sub>1</sub>	L <sub>2</sub>	Travel deviation $e_p$	Variation $V_{300}$				Dynamic $C_a$	Static $C_{0a}$
SR0601K-200R200C7	175	Ct7	200	—	$\pm 0.03$	—	0.080	~0.020	—	560	950
SR0601K-200R200C10	175	Ct10	200	—	$\pm 0.14$	—	0.160	~0.050			

Note) Please designate end-journal profile with your sketch.