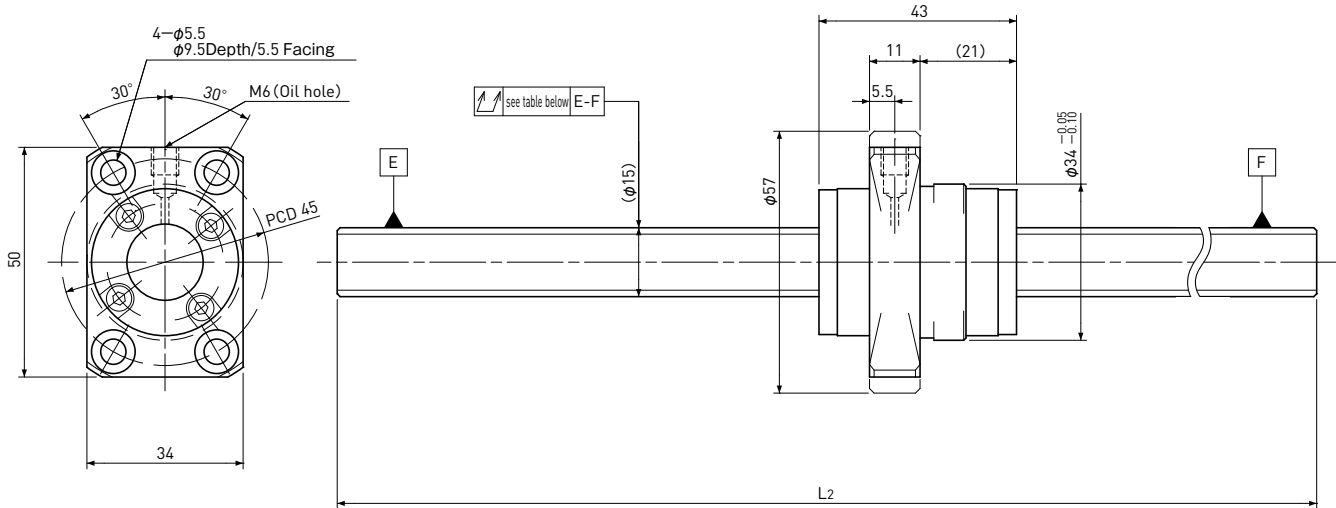


# SR1510

Shaft dia.  $\phi 15$  Lead 10mm

Ct7&Ct10



Unit: mm

Ball Screw Specifications		
Ball size	$\phi 3.175$	
Number of thread	2	
Thread direction	Right	
Shaft root dia.	$\phi 12.2$	
Number of circuit	2.7×2	
Material	Shaft	SUJ2
	Nut	SCM415
Surface hardness	HRC58~62 (Thread area)	
Anti-rust treatment	Anti-rust oil	

Unit: mm

Ball Screw Model	Travel	Grade	Shaft length		Lead accuracy		Total Run-out	Axial play	Preload Torque Nm	Basic Load Rating N	
			L <sub>1</sub>	L <sub>2</sub>	Travel deviation $e_p$	Variation $V_{300}$				Dynamic $C_a$	Static $C_{oa}$
SR1510-1000R1000C7	955	Ct7	—	1000	$\pm 0.17$	0.05	0.200	~0.020	—	12000	25000
SR1510-1000R1000C10	955	Ct10	—	1000	$\pm 0.7$	0.21	0.400	~0.050			

Note) Please designate end-journal profile with your sketch.