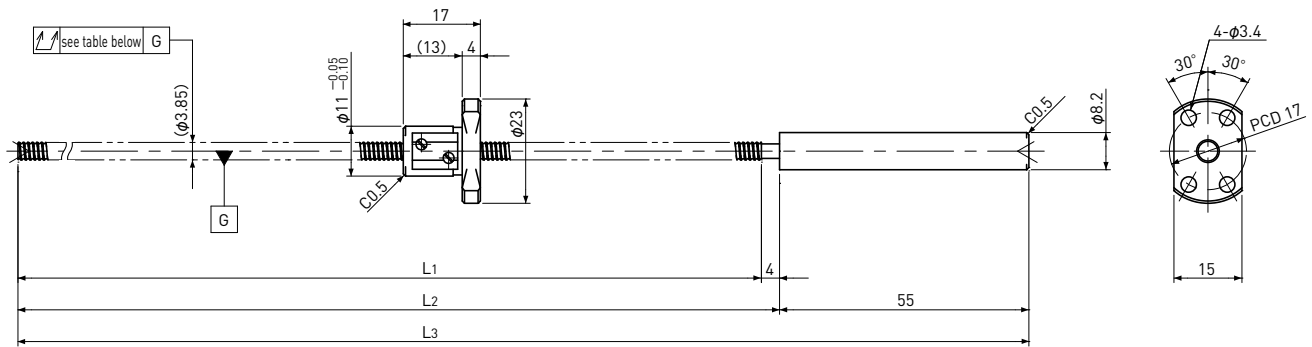


SRT0401 | Shaft dia. $\phi 4$ Lead 1mm

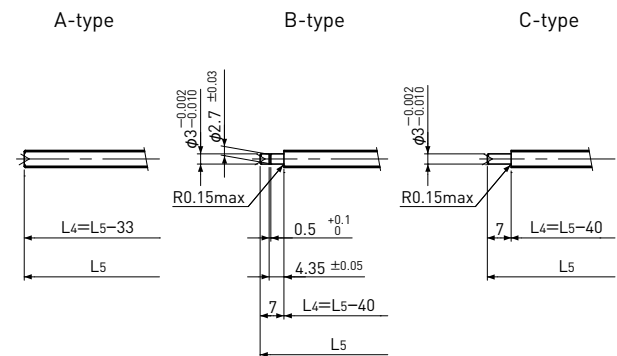
| Ct7&Ct10 |



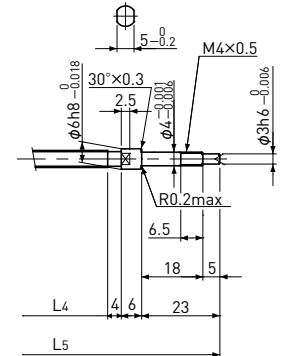
Unit: mm

Ball Screw Specifications		
Ball size		$\phi 0.8$
Number of thread		1
Thread direction		Right
Shaft root dia.		$\phi 3.3$
Number of circuit		3.7×1
Material	Shaft	SCM415H+SUS303
	Nut	SCM415H
Surface hardness		HRC58~ (Thread area)
Anti-rust treatment		Anti-rust oil

End-journal profile Supported-side



Fixed-side



L₄: Thread length after end-journal machining.
L₅: Total length after end-journal machining.

Support-unit Recommendation	Supported-side	MSU-4CS/4GS, SUP03-S
	Fixed-side	MSU-4C/4G, EK4

D-type : Other than the above.

Unit: mm

Ball Screw Model	Travel	Grade	Shaft length			Lead accuracy		Total Run-out	Axial play	Preload Torque Nm	Basic Load Rating N	
			L ₁	L ₂	L ₃	Travel deviation e _p	Variation V ₃₀₀				Dynamic Ca	Static Coa
SRT0401-96R155C7	75	Ct7	96	100	155	± 0.02	—	0.080	~0.020	—	560	790
SRT0401-216R275C7	195	Ct7	216	220	275	± 0.03	—	0.120				
SRT0401-96R155C10	75	Ct10	96	100	155	± 0.06	—	0.160	~0.050			
SRT0401-216R275C10	195	Ct10	216	220	275	± 0.15	—	0.240				

Note) Please refer to p-A287 for order code of end-journal machining.