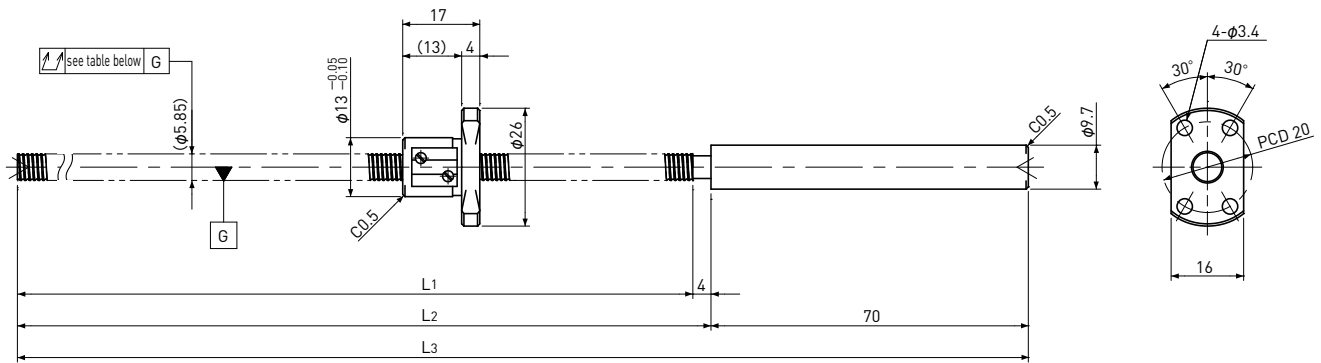


SRT0601 | Shaft dia. $\phi 6$ Lead 1mm

| Ct7&Ct10 |

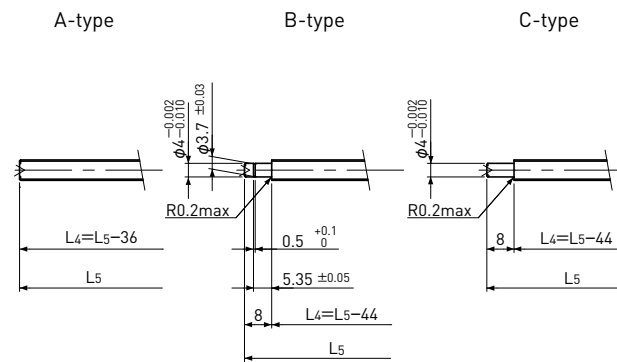
* Please refer to p-A315 for stainless steel type.



Unit: mm

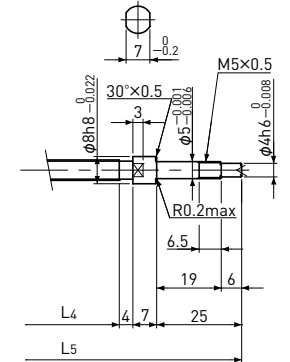
Ball Screw Specifications	
Ball size	$\phi 0.8$
Number of thread	1
Thread direction	Right
Shaft root dia.	$\phi 5.3$
Number of circuit	3.7×1
Material	Shaft
	Nut
Surface hardness	HRC58~ (Thread area)
Anti-rust treatment	Anti-rust oil

End-journal profile Supported-side



L4: Thread length after end-journal machining.
L5: Total length after end-journal machining.

Fixed-side



Support-unit Recommendation	Supported-side	Fixed-side
	MSU-5CS/5GS, SUP04-S	MSU-5C/5G, EK5

D-type : Other than the above.

Unit: mm

Ball Screw Model	Travel	Grade	Shaft length			Lead accuracy		Total Run-out	Axial play	Preload Torque Nm	Basic Load Rating N	
			L1	L2	L3	Travel deviation e_p	Variation V_{300}				Dynamic C_a	Static C_{0a}
SRT0601-146R220C7	125	Ct7	146	150	220	± 0.02	—	0.080	~0.020	—	680	1200
SRT0601-261R335C7	240	Ct7	261	265	335	± 0.04	—	0.120				
SRT0601-146R220C10	125	Ct10	146	150	220	± 0.10	—	0.160	~0.050			
SRT0601-261R335C10	240	Ct10	261	265	335	± 0.18	—	0.240				

Note) Please refer to p-A287 for order code of end-journal machining.