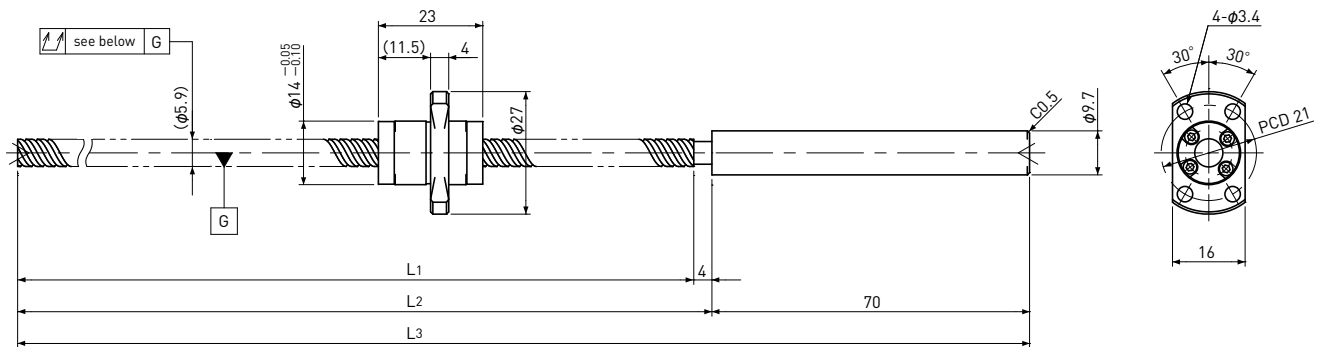


SRT0610

Shaft dia. $\phi 6$ Lead 10mm

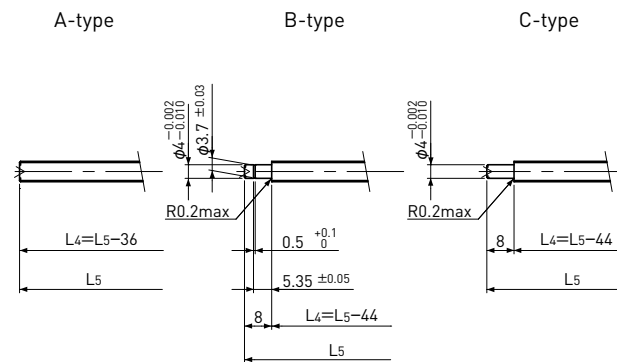
| Ct7&Ct10 |



Unit : mm

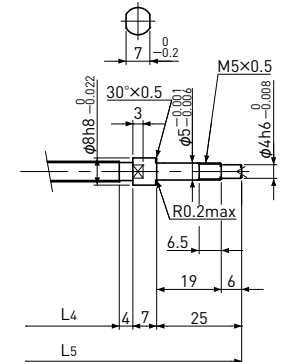
Ball Screw Specifications	
Ball size	$\phi 1.2$
Number of thread	2
Thread direction	Right
Shaft root dia.	$\phi 5.0$
Number of circuit	1.2×2
Material	Shaft
	Nut
Surface hardness	HRC58~ (Thread area)
Anti-rust treatment	Anti-rust oil

End-journal profile Supported-side



L₄: Thread length after end-journal machining.
L₅: Total length after end-journal machining.

Fixed-side



Support-unit Recommendation	Supported-side	Fixed-side
	MSU-5CS/5GS	MSU-5C/5G

D-type : Other than the above.

Unit : mm

Ball Screw Model	Travel	Grade	Shaft length			Lead accuracy		Total Run-out	Axial play	Preload Torque Nm	Basic Load Rating N	
			L ₁	L ₂	L ₃	Travel deviation e _p	Variation V ₃₀₀				Dynamic Ca	Static Coa
SRT0610-146R220C7	120	Ct7	146	150	220	±0.02	—	0.080	~0.020	—	950	1600
SRT0610-261R335C7	235	Ct7	261	265	335	±0.04	—	0.120				
SRT0610-146R220C10	120	Ct10	146	150	220	±0.10	—	0.160	~0.050	—	950	1600
SRT0610-261R335C10	235	Ct10	261	265	335	±0.18	—	0.240				

Note) Please refer to page A287 for order code of end-journal machining.