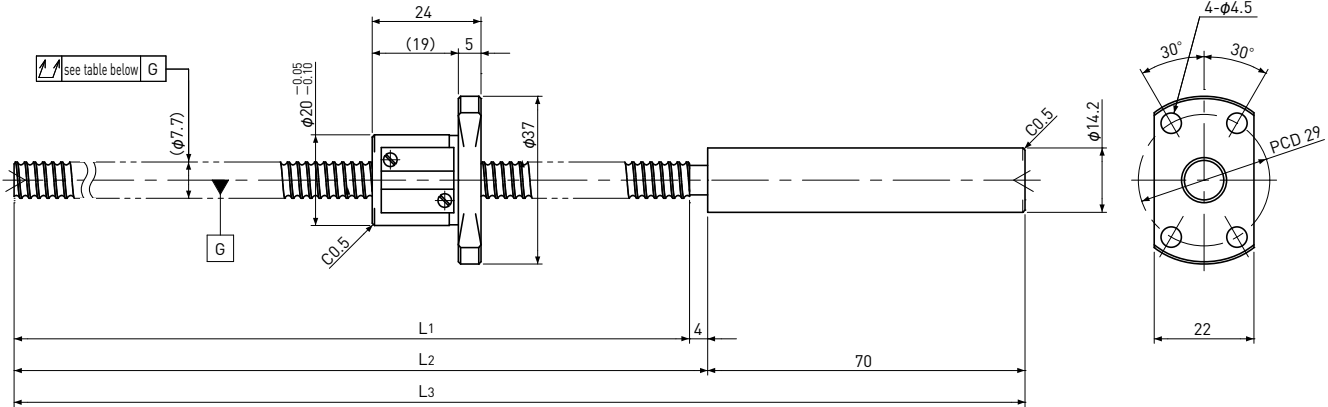


SRT0802 | Shaft dia. $\phi 8$ Lead 2mm

| Ct7&Ct10 |

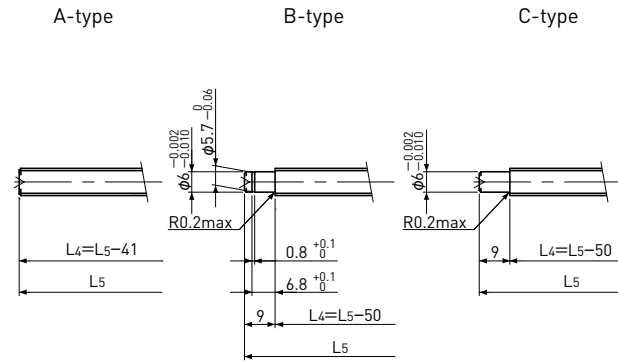
* Please refer to p-A317 for stainless steel type.



Unit: mm

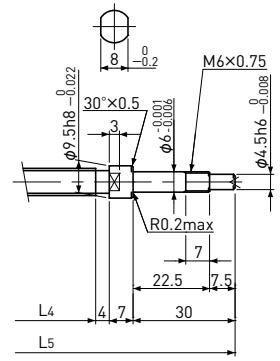
Ball Screw Specifications		
Ball size		$\phi 1.5875$
Number of thread		1
Thread direction		Right
Shaft root dia.		$\phi 6.6$
Number of circuit		3.7×1
Material	Shaft	SCM415H+SUS303
	Nut	SCM415H
Surface hardness		HRC58~ (Thread area)
Anti-rust treatment		Anti-rust oil

End-journal profile Supported-side



L4: Thread length after end-journal machining.
L5: Total length after end-journal machining.

Fixed-side



Support-unit Recommendation	Supported-side	MSU-6CS/6GS, EF6
	Fixed-side	MSU-6C/6G, EK6

D-type : Other than the above.

Unit: mm

Ball Screw Model	Travel	Grade	Shaft length			Lead accuracy		Total Run-out	Axial play	Preload Torque Nm	Basic Load Rating N	
			L1	L2	L3	Travel deviation e_p	Variation V_{300}				Dynamic C_a	Static C_{oa}
SRT0802-196R270C7	170	Ct7	196	200	270	± 0.03	—	0.080	~0.020	—	2400	4100
SRT0802-356R430C7	330	Ct7	356	360	430	± 0.06	0.05	0.120				
SRT0802-196R270C10	170	Ct10	196	200	270	± 0.13	—	0.160	~0.050	—	2400	4100
SRT0802-356R430C10	330	Ct10	356	360	430	± 0.24	0.21	0.240				

Note) Please refer to p-A287 for order code of end-journal machining.