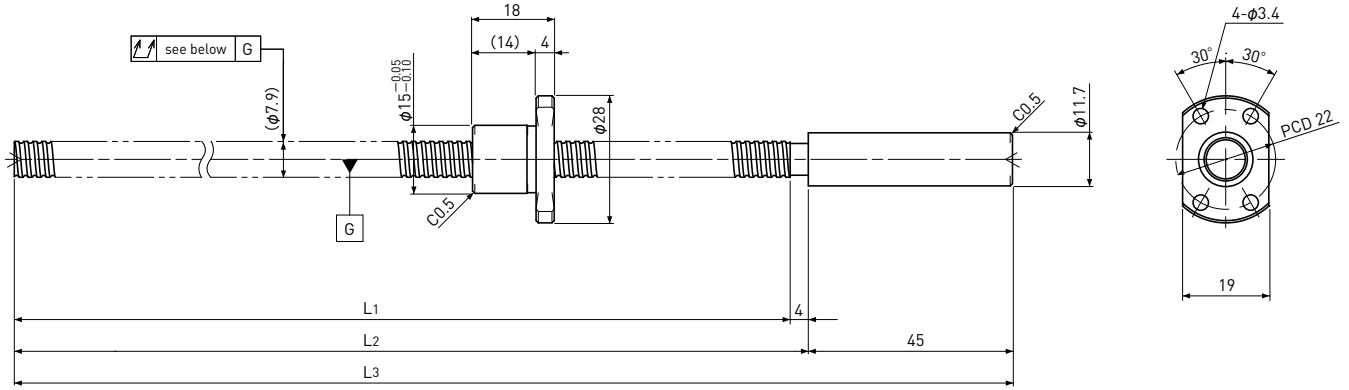


SRT0802K

Compact Nut
Shaft dia. $\phi 8$ Lead 2mm

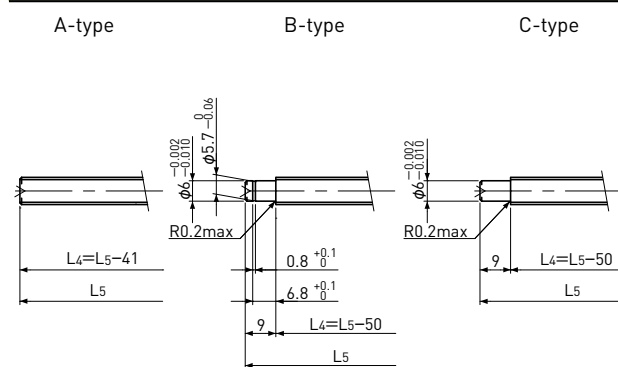
Ct7&Ct10



Unit : mm

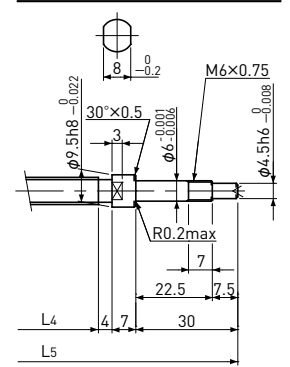
Ball Screw Specifications	
Ball size	$\phi 1.2$
Number of thread	1
Thread direction	Right
Shaft root dia.	$\phi 7.0$
Number of circuit	1×3
Material	Shaft S55C+SUS303
	Nut SCM415H
Surface hardness	HRC58~ (Thread area)
Anti-rust treatment	Anti-rust oil

End-journal profile Supported-side



L4: Thread length after end-journal machining.
L5: Total length after end-journal machining.

Fixed-side



Support-unit Recommendation	Supported-side	Fixed-side
	MSU-6CS/6GS	MSU-6C/6G

D-type : Other than the above.

Unit : mm

Ball Screw Model	Travel	Grade	Shaft length			Lead accuracy		Total Run-out	Axial play	Preload Torque Nm	Basic Load Rating N	
			L1	L2	L3	Travel deviation e_p	Variation V_{300}				Dynamic C_a	Static C_{oa}
SRT0802K-171R220C7	145	Ct7	171	175	220	± 0.03	—	0.080	~ 0.020	—	1300	2300
SRT0802K-171R220C10	145	Ct10	171	175	220	± 0.11	—	0.160	~ 0.050			

Note) Please refer to page A287 for order code of end-journal machining.