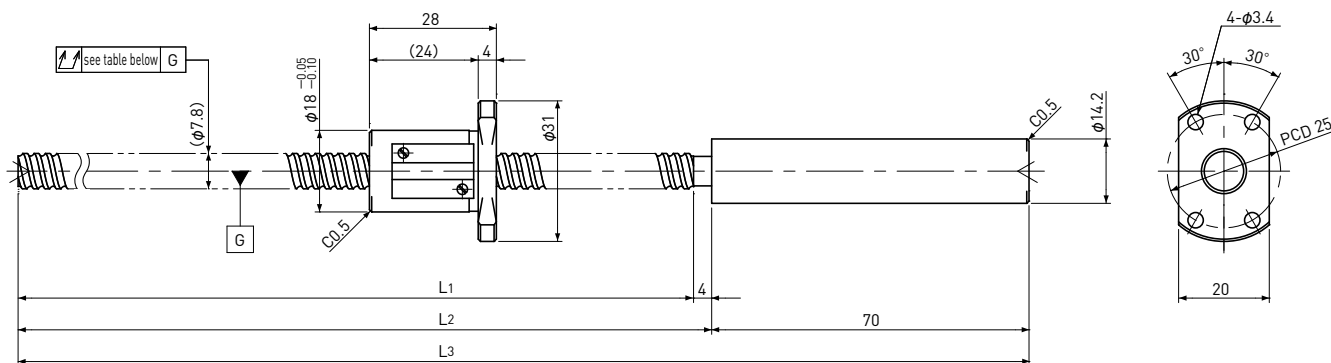


SRT0805

Shaft dia. $\phi 8$ Lead 5mm

| Ct7&Ct10 |



Unit: mm

Ball Screw Specifications	
Ball size	$\phi 1.5875$
Number of thread	1
Thread direction	Right
Shaft root dia.	$\phi 6.6$
Number of circuit	2.7×1
Material	Shaft
	Nut
Surface hardness	HRC58~ (Thread area)
Anti-rust treatment	Anti-rust oil

End-journal profile Supported-side			Fixed-side
A-type	B-type	C-type	
L ₄ : Thread length after end-journal machining. L ₅ : Total length after end-journal machining.			
Support-unit Recommendation		Supported-side	MSU-6CS/6GS, EF6
		Fixed-side	MSU-6C/6G, EK6
D-type : Other than the above.			

Unit: mm

Ball Screw Model	Travel	Grade	Shaft length			Lead accuracy		Total Run-out	Axial play	Preload Torque Nm	Basic Load Rating N	
			L ₁	L ₂	L ₃	Travel deviation e_p	Variation V_{300}				Dynamic Ca	Static Coa
SRT0805-196R270C7	165	Ct7	196	200	270	± 0.03	—	0.080	~0.020	—	1850	3000
SRT0805-356R430C7	325	Ct7	356	360	430	± 0.06	0.05	0.120				
SRT0805-196R270C10	165	Ct10	196	200	270	± 0.13	—	0.160	~0.050	—	1850	3000
SRT0805-356R430C10	325	Ct10	356	360	430	± 0.24	0.21	0.240				

Note) Please refer to p-A287 for order code of end-journal machining.