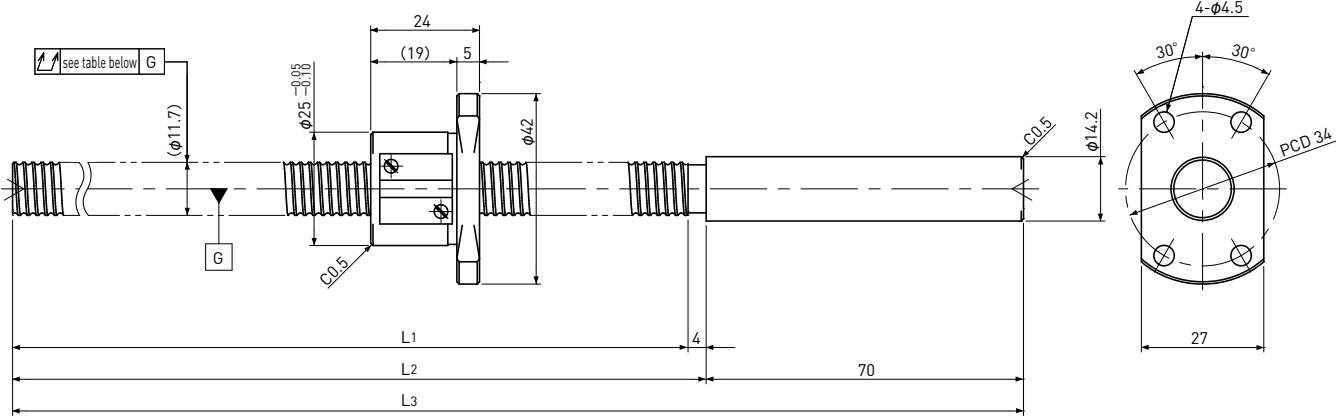


# SRT1202

Shaft dia.  $\phi 12$  Lead 2mm

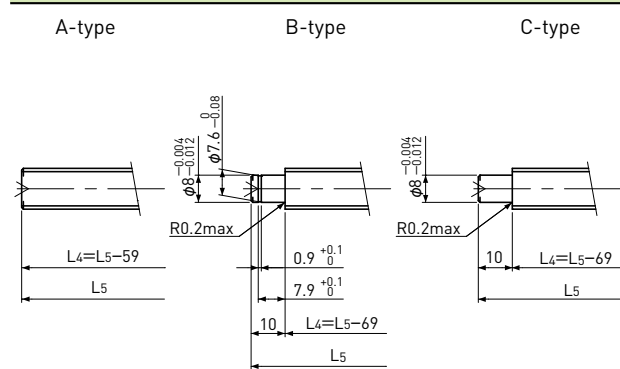
Ct7&Ct10



Unit: mm

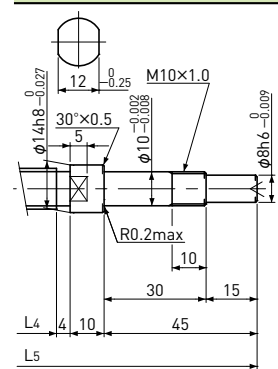
Ball Screw Specifications		
Ball size		$\phi 1.5875$
Number of thread		1
Thread direction		Right
Shaft root dia.		$\phi 10.6$
Number of circuit		$3.7 \times 1$
Material	Shaft	SCM415H+SUS303
	Nut	SCM415H
Surface hardness		HRC58~ (Thread area)
Anti-rust treatment		Anti-rust oil

### End-journal profile Supported-side



L4: Thread length after end-journal machining.  
L5: Total length after end-journal machining.

### Fixed-side



Support-unit Recommendation	Supported-side	Fixed-side
	EF10	EK10

D-type : Other than the above.

Unit: mm

Ball Screw Model	Travel	Grade	Shaft length			Lead accuracy		Total Run-out	Axial play	Preload Torque Nm	Basic Load Rating N	
			L1	L2	L3	Travel deviation $e_p$	Variation $V_{300}$				Dynamic $C_a$	Static $C_{oa}$
SRT1202-196R270C7	170	Ct7	196	200	270	$\pm 0.03$	—	0.080	~0.020	—	3000	6400
SRT1202-396R470C7	370	Ct7	396	400	470	$\pm 0.06$	0.05	0.080				
SRT1202-196R270C10	170	Ct10	196	200	270	$\pm 0.13$	—	0.160	~0.050	—	3000	6400
SRT1202-396R470C10	370	Ct10	396	400	470	$\pm 0.27$	0.21	0.160				

Note ) Please refer to p-A287 for order code of end-journal machining.