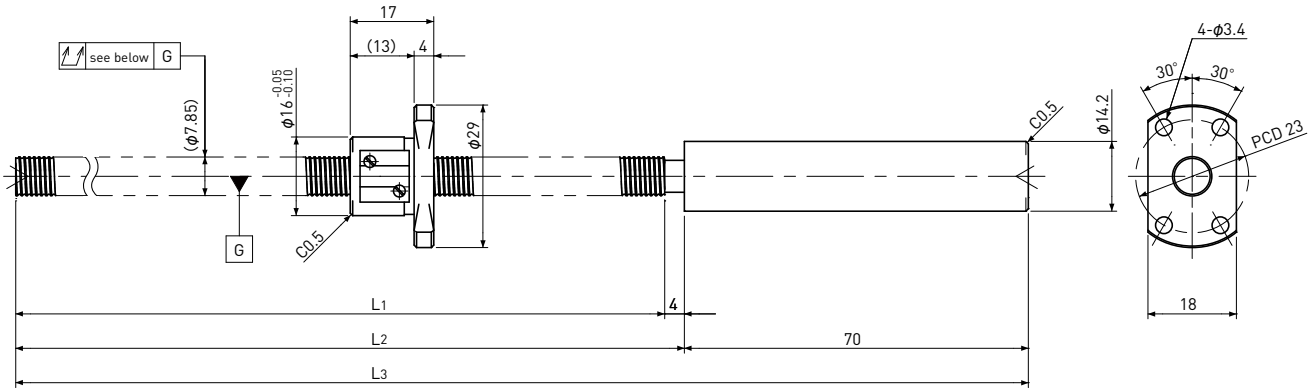


SSRT0801

Stainless
Shaft dia. $\phi 8$ Lead 1mm

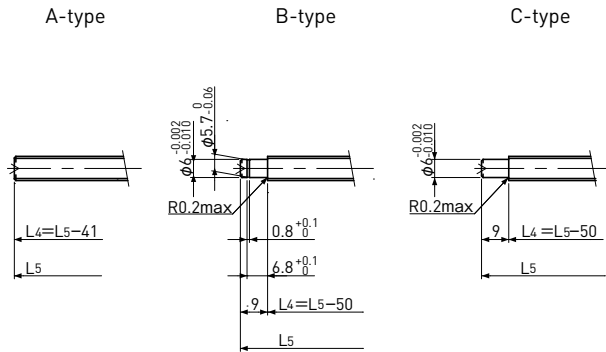
Ct7&Ct10



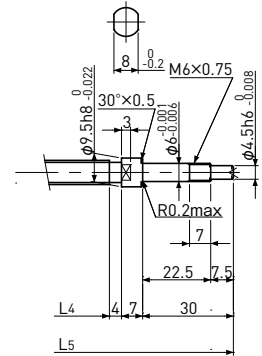
Unit : mm

Ball Screw Specifications		
Ball size		$\phi 0.8$
Number of thread		1
Thread direction		Right
Shaft root dia		$\phi 7.3$
Number of circuit		3.7×1
Material	Shaft	SUS440C+SUS303
	Nut	SUS440C
Surface hardness		HRC55~ (Thread area)
Anti-rust treatment		Anti-rust oil

End-journal profile Supported-side



Fixed-side



L4: Thread length after end-journal machining.
L5: Total length after end-journal machining.

Support-unit Recommendation	Supported-side	MSU-6CS/6GS
	Fixed-side	MSU-6C/6G

D-type : Other than the above.

Unit : mm

Ball Screw Model	Travel	Grade	Shaft length			Lead accuracy		Total Run-out	Axial play	Preload Torque Nm	Basic Load Rating N	
			L1	L2	L3	Travel deviation e_p	Variation V_{300}				Dynamic C_a	Static C_{oa}
SSRT0801-196R270C7	175	Ct7	196	200	270	± 0.03	—	0.080	~0.020	—	630	1250
SSRT0801-356R430C7	335	Ct7	356	360	430	± 0.06	0.05	0.120				
SSRT0801-196R270C10	175	Ct10	196	200	270	± 0.13	—	0.160	~0.050			
SSRT0801-356R430C10	335	Ct10	356	360	430	± 0.24	0.21	0.240				

Note) Please refer to page A287 for order code of end-journal machining.