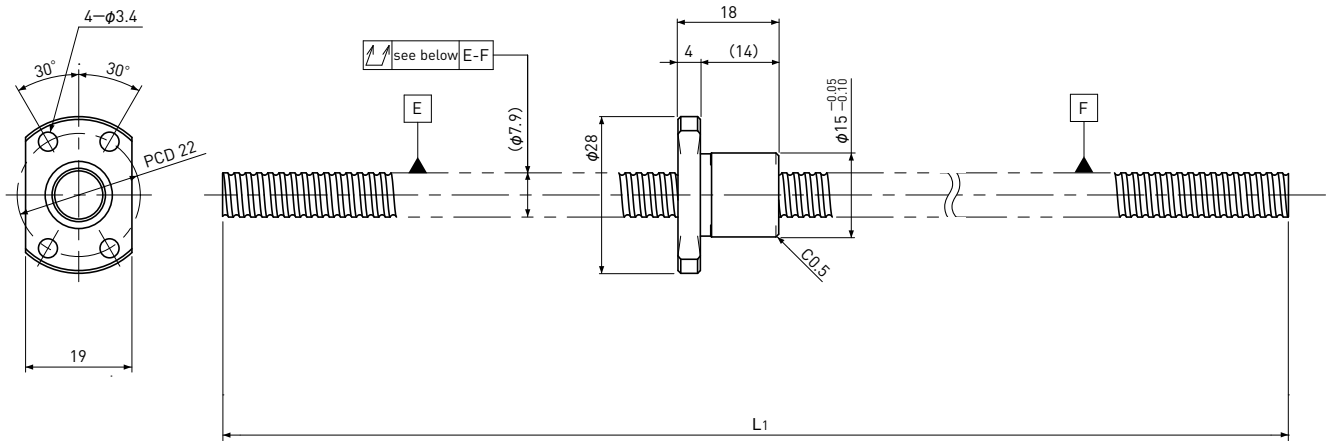


PSR0802K

Compact Nut

Shaft dia. $\phi 8$ Lead 2mm

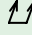
C5



Unit: mm

Ball Screw Specifications		
Ball size	$\phi 1.2$	
Number of thread	1	
Thread direction	Right	
Shaft root dia.	$\phi 7.0$	
Number of circuit	1 × 3	
Material	Shaft	S55C
	Nut	SCM415H
Surface hardness	HRC58~ (Thread area)	
Anti-rust treatment	Anti-rust oil	

Unit: mm

Ball Screw Model	Travel	Shaft length	Travel deviation e_p	Total Run-out 	Axial play	Basic Load Rating N	
		L_1				Dynamic C_a	Static C_{0a}
PSR0802K-230R230C5	205	230	± 0.023	0.065	~ 0.005	1300	2300

Note) Please designate end-journal profile with your sketch.