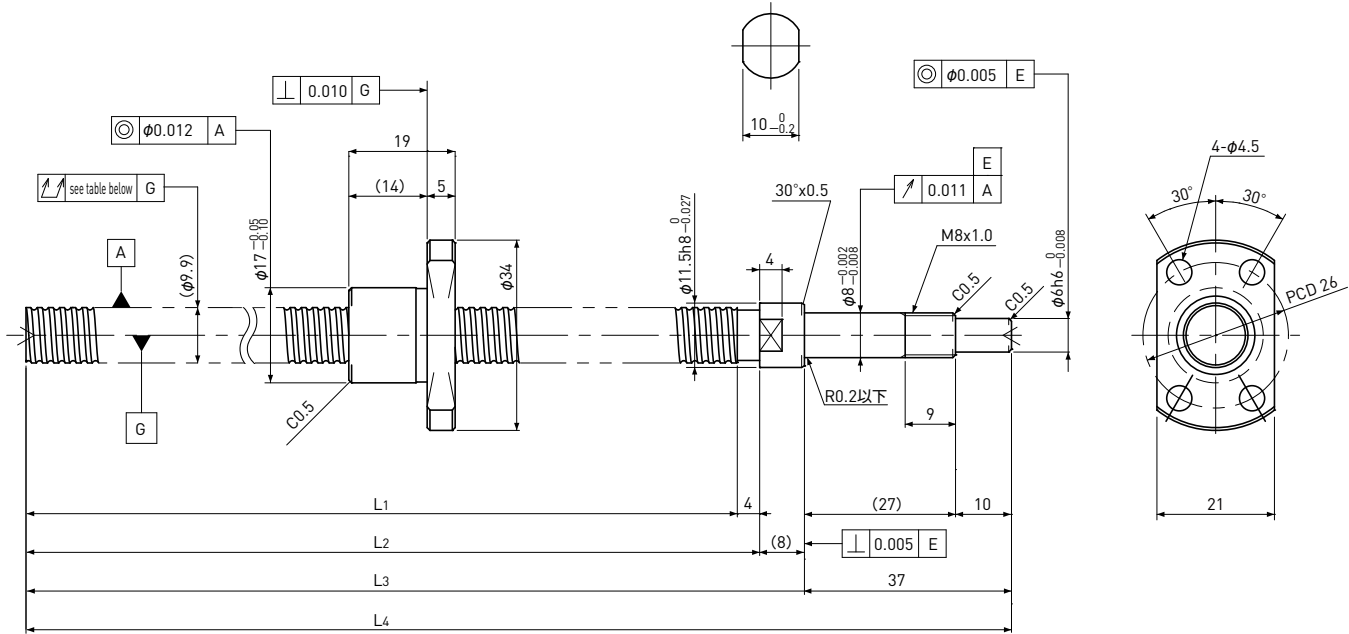


PSRT1002K

Compact Nut
Shaft dia. $\phi 10$ Lead 2mm

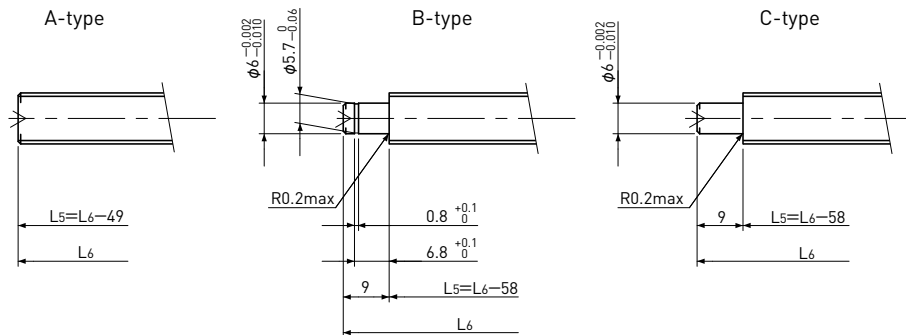
C5



Unit: mm

Ball Screw Specifications		
Ball size	$\phi 1.2$	
Number of thread	1	
Thread direction	Right	
Shaft root dia.	$\phi 9.0$	
Number of circuit	1×3	
Material	Shaft	S55C+SUS303
	Nut	SCM415H
Surface hardness	HRC58~ (Thread area)	
Lubrication	KSS Original Grease MSG No.2	

Supported-side end-journal profile



L5: Thread length after end-journal machining.
L6: Total length after end-journal machining.

Support-unit Recommendation	Supported-side	Fixed-side
	MSU-8CS/8GS, EF8	MSU-8C/8G, EK8

D-type : Other than the above.

Unit: mm

Ball Screw Model	Travel	Shaft length				Travel deviation e_p	Total Run-out	Axial play	Basic Load Rating N	
		L1	L2	L3	L4				Dynamic Ca	Static Coa
PSRT1002K-201R250C5	175	201	205	213	250	± 0.023	0.055	~ 0.005	1450	3000

Note) Please refer to page A-321 for order code of end-journal machining.