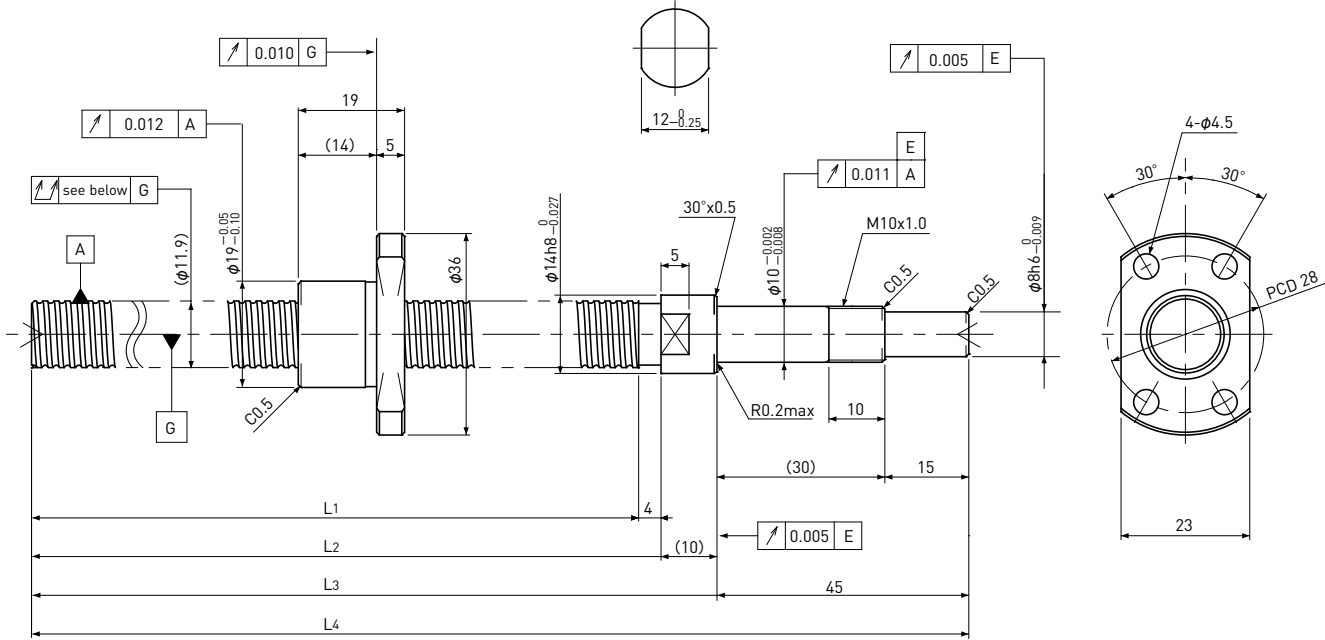


# PSRT1202K

Compact Nut  
Shaft dia.  $\phi 12$  Lead 2mm

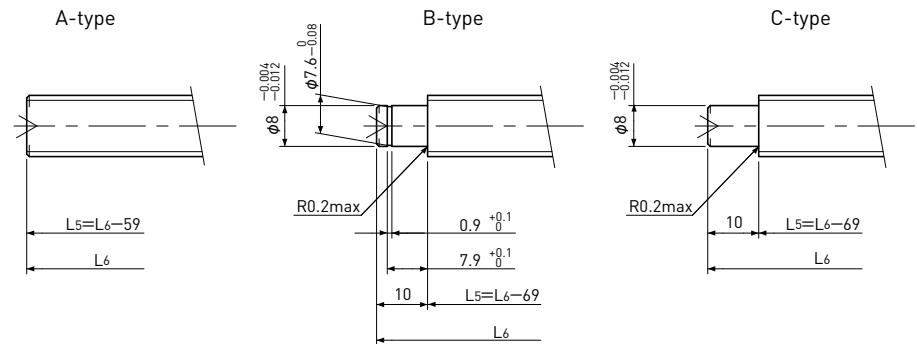
# C5



Unit: mm

Ball Screw Specifications		
Ball size	$\phi 1.2$	
Number of thread	1	
Thread direction	Right	
Shaft root dia.	$\phi 11.0$	
Number of circuit	1 × 3	
Material	Shaft	S55C+SUS303
	Nut	SCM415H
Surface hardness	HRC58~ (Thread area)	
Lubrication	KSS Original Grease MSG No.2	

### Supported-side end-journal profile



L5: Thread length after end-journal machining.  
L6: Total length after end-journal machining.

Support-unit Recommendation	Supported-side	Fixed-side
	—	—

D-type : Other than the above.

Unit: mm

Ball Screw Model	Travel	Shaft length				Travel deviation $e_p$	Total Run-out	Axial play	Basic Load Rating N	
		L1	L2	L3	L4				Dynamic $C_a$	Static $C_{0a}$
PSRT1202K-271R330C5	245	271	275	285	330	$\pm 0.023$	0.065	$\sim 0.005$	1600	3700

Note) Please refer to page A321 for order code of end-journal machining.