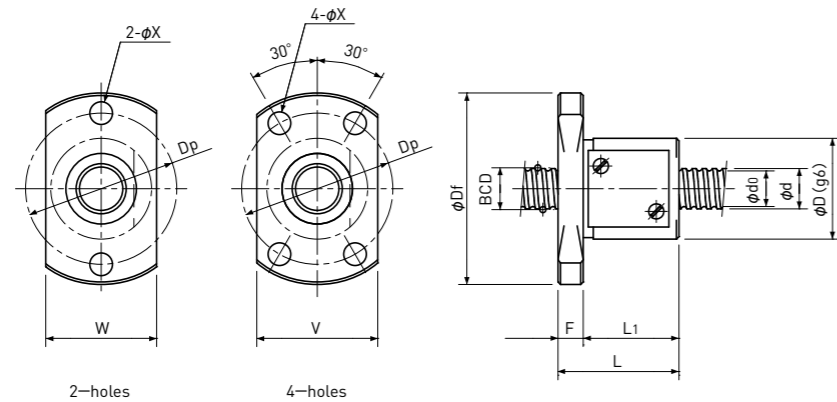


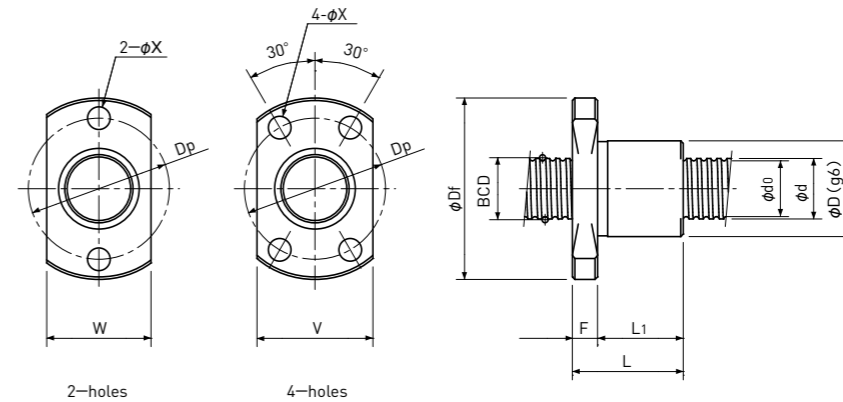
Precision Ball Screws

Single Nut with Flange

Backlash type/Preload type



Type-1:Return-plate type



Type-2:Internal-deflector type or End-deflector type

Unit : mm

Ball Nut Model number	Shaft nominal dia. d	Lead	Ball size	BCD	Lead angle	Root dia. d ₀	Number of Circuit	Basic Load Rating N		Nut Rigidity N/μm	Nut dimension										Ball Nut Model number
								Dynamic Ca	Static Coa		Nut type	D	Df	L	L ₁	F	W	V	Dp	Bolt Hole X	
FBS 0800.5 A	8	0.5	0.4	8.10	1°08'	7.6	2.7×1	220 / —	590 / —	64 / —	1	14	27	13	10	3	16	—	21	3.4	FBS 0800.5 A
FKB 0801 A	8	1	0.8	8.20	2°13'	7.3	1×3	650 / 650	1300 / 1300	70 / 109	2	13	26	15	11	4	15	17	20	3.4	FKB 0801 A
FBS 0801 B	8	1	0.8	8.15	2°15'	7.3	3.7×1	780 / 490	1650 / 820	95 / 80	1	16	30	17	13	4	18	18	24	3.4	FBS 0801 B
FKB 0801.5 A	8	1.5	1.0	8.30	3°18'	7.2	1×3	890 / 890	1650 / 1650	73 / 113	2	15	28	20	16	4	17	19	22	3.4	FKB 0801.5 A
FBS 0801.5 B	8	1.5	1.0	8.20	3°20'	7.1	3.7×1	1100 / 700	2200 / 1100	99 / 83	1	16	30	19	15	4	18	18	24	3.4	FBS 0801.5 B
FKB 0802 A	8	2	1.2	8.30	4°23'	7.0	1×3	1300 / 1300	2300 / 2300	77 / 121	2	15	28	18	14	4	17	19	22	3.4	FKB 0802 A
FBS 0802 B(1)	8	2	1.0	8.20	4°26'	7.1	3.7×1	1100 / 700	2200 / 1100	99 / 83	1	16	30	21	17	4	18	18	24	3.4	FBS 0802 B(1)
FBS 0802 B(2)	8	2	1.5875	8.30	4°23'	6.6	3.7×1	2400 / 1550	4100 / 2100	111 / 94	1	20	38	24	19	5	22	23	30	4.5	FBS 0802 B(2)

Note 1) The diameter of one of the Screw Shaft ends must be less than the Screw Shaft Root diameter, otherwise Ball Nut cannot be installed.

Note 2) Ball Nut dimension is without seal at the both ends.

If the seals are required, Ball Nut dimension should be changed, in that case, please ask KSS. Some type of Ball Nuts cannot equip with seals, please ask KSS representative.

Note 3) The Rigidity values shown in the table are theoretical values of Ball Nut Rigidity calculated from the amount of Elastic Displacement under the following conditions.
Backlash type ; Apply the Axial load equivalent to 30% of the Basic Dynamic Load Rating Ca.
Preload type ; Apply the Preload equivalent to 5% of the Basic Dynamic Load Rating Ca.
For Axial load or Preload condition other than the above, see the formula in p-A823, you can calculate Rigidity using this formula.

Note 4) All models are Right-hand Screw. If Left-hand Screw is required, please ask KSS representative.

Note 5) Basic Load Rating and Rigidity for Backlash type and Preload type are described in the same cell.

Basic Load Rating N		Nut Rigidity N/μm
Dynamic Ca	Static Coa	
1000 / 640	3300 / 1650	164 / 138
		Preload type
		Backlash type