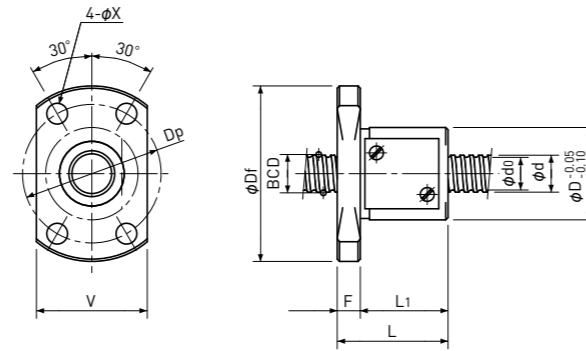
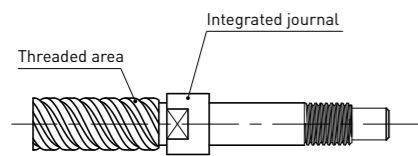


Rolled Ball Screws

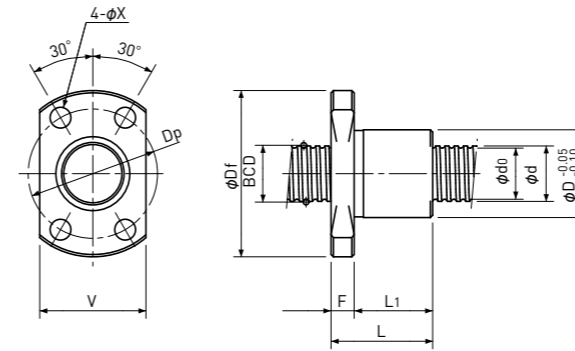
Single Nut with Flange

Backlash type

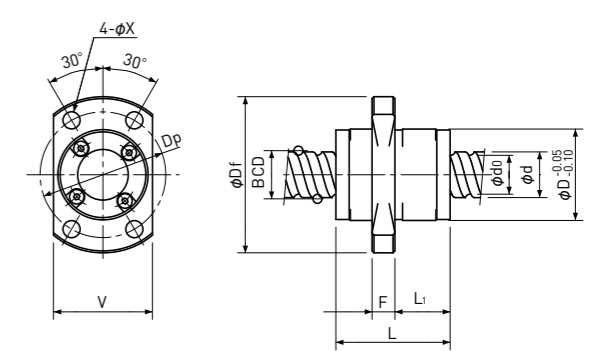
■ Rolled Ball Screws with integrated journal are available ($\phi 12$ or less only), which have larger diameter than threaded area shown below.



Type-1:Return-plate type



Type-2:Internal-deflector type or End-deflector type



Type-3:End-cap type or End-deflector type

Unit : mm

Ball Nut Model number	Shaft nominal dia. d	Lead	Ball size	BCD	Lead angle	Root dia. d ₀	Number of Circuit	Basic Load Rating N		Nut Rigidity N/μm	Nut dimension										Ball Nut Model number
								Dynamic Ca	Static Coa		Nut type	D	Df	L	L ₁	F	W	V	Dp	Bolt Hole X	
MRB 0401	4	1	0.8	4.15	4° 23'	3.3	3.7×1	560	790	54	1	11	23	17	13	4	—	15	17	3.4	MRB 0401
MRB 0401K	4	1	0.6	4.15	4° 23'	3.4	1×3	300	430	38	2	9	19	13	10	3	—	13	14	2.9	MRB 0401K
MRB 0402	4	2	0.8	4.15	8° 43'	3.3	2.7×1	420	570	39	1	11	23	19	15	4	—	15	17	3.4	MRB 0402
MRB 0504	5	4	0.8	5.15	13° 53'	4.3	2.7×1	470	720	47	1	12	24	22	18	4	—	16	18	3.4	MRB 0504
MRB 0601 **	6	1	0.8	6.15	2° 58'	5.3	3.7×1	680	1200	75	1	13	26	17	13	4	—	16	20	3.4	MRB 0601 **
MRB 0601K	6	1	0.8	6.20	2° 56'	5.3	1×3	560	950	55	2	11	23	14.5	11	3.5	—	15	17	3.4	MRB 0601K
MRB 0602	6	2	1.0	6.20	5° 52'	5.1	2.7×1	750	1200	58	1	15	28	17	13	4	—	19	22	3.4	MRB 0602
MRB 0606	6	6	1.0	6.30	16° 52'	5.2	1.6×2	870	1450	67	3	14	27	17	8	4	—	16	21	3.4	MRB 0606
MRB 0610	6	10	1.2	6.30	26° 48'	5.0	1.2×2	950	1600	50	3	14	27	23	11.5	4	—	16	21	3.4	MRB 0610

- Note 1) All models are Right-hand screw.
- Note 2) The diameter of the Screw Shaft both ends must be less than the Screw Shaft Root diameter, because of production and Nut assembly reason.
- Note 3) Ball Nut dimension is without seal at the both ends. All type of Ball Nuts cannot equip with seals.
- Note 4) Rigidity
The Rigidity values shown in the table are theoretical values calculated from the amount of Elastic Displacement under the Axial load equivalent to 30% of the Basic Dynamic Load Rating Ca.
For Axial load condition other than the above, see the formula in p-A823, you can calculate Rigidity using this formula.
- Note 5) Stainless Rolled Ball Screw
Stainless Rolled Ball Screw is available for Ball Nut Model Number marked **.