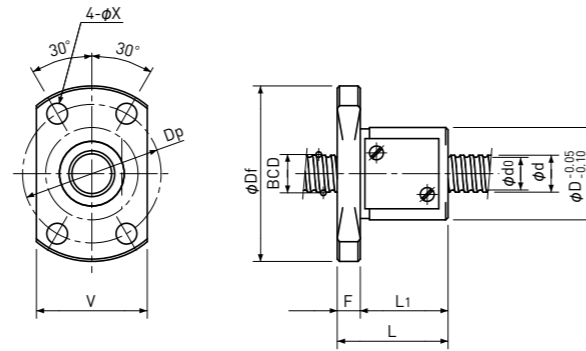
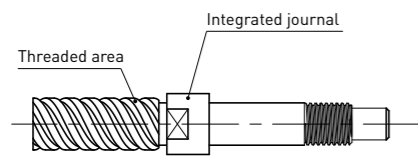


Rolled Ball Screws

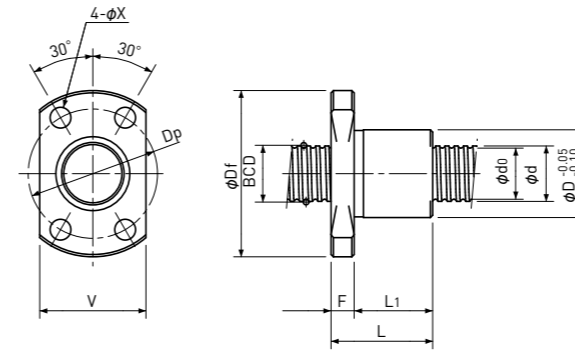
Single Nut with Flange

Backlash type

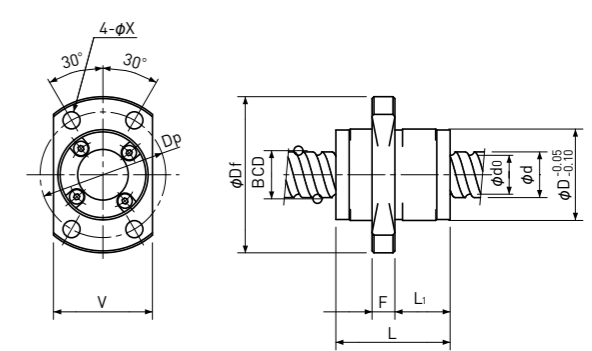
■ Rolled Ball Screws with integrated journal are available ($\phi 12$ or less only), which have larger diameter than threaded area shown below.



Type-1: Return-plate type



Type-2: Internal-deflector type or End-deflector type



Type-3: End-cap type or End-deflector type

Unit: mm

Ball Nut Model number	Shaft nominal dia. d	Lead	Ball size	BCD	Lead angle	Root dia. d ₀	Number of Circuit	Basic Load Rating N		Nut Rigidity N/μm	Nut dimension										Ball Nut Model number
								Dynamic Ca	Static Coa		Nut type	D	Df	L	L ₁	F	W	V	Dp	Bolt Hole X	
MRB 0801 **	8	1	0.8	8.15	2° 15'	7.3	3.7×1	780	1650	95	1	16	29	17	13	4	—	18	23	3.4	MRB 0801 **
MRB 0801K	8	1	0.8	8.20	2° 13'	7.3	1×3	650	1300	70	2	13	26	15	11	4	—	17	20	3.4	MRB 0801K
MRB 0802 **	8	2	1.5875	8.30	4° 23'	6.6	3.7×1	2400	4100	111	1	20	37	24	19	5	—	22	29	4.5	MRB 0802 **
MRB 0802K	8	2	1.2	8.30	4° 23'	7.0	1×3	1300	2300	77	2	15	28	18	14	4	—	19	22	3.4	MRB 0802K
MRB 0802.5	8	2.5	1.5875	8.00	5° 41'	6.3	2.7×1	1850	3000	80	2	16	29	16	12	4	—	18	23	3.4	MRB 0802.5
MRB 0805	8	5	1.5875	8.30	10° 51'	6.6	2.7×1	1850	3000	82	1	18	31	28	24	4	—	20	25	3.4	MRB 0805
MRB 0808	8	8	1.5875	8.40	16° 52'	6.7	1.6×2	2200	3800	95	3	18	31	20	10	4	—	20	25	3.4	MRB 0808
MRB 0810	8	10	1.5875	8.40	20° 45'	6.7	1.6×2	2200	3800	92	3	18	31	24	13	4	—	20	25	3.4	MRB 0810
MRB 0812	8	12	1.5875	8.40	24° 27'	6.7	1.6×2	2200	4000	90	3	18	31	27	17	4	—	20	25	3.4	MRB 0812

Note 1) All models are Right-hand screw.

Note 2) The diameter of the Screw Shaft both ends must be less than the Screw Shaft Root diameter, because of production and Nut assembly reason.

Note 3) Ball Nut dimension is without seal at the both ends. All type of Ball Nuts cannot equip with seals.

Note 4) Rigidity

The Rigidity values shown in the table are theoretical values calculated from the amount of Elastic Displacement under the Axial load equivalent to 30% of the Basic Dynamic Load Rating Ca.

For Axial load condition other than the above, see the formula in p-A823, you can calculate Rigidity using this formula.

Note 5) Stainless Rolled Ball Screw

Stainless Rolled Ball Screw is available for Ball Nut Model Number marked **.