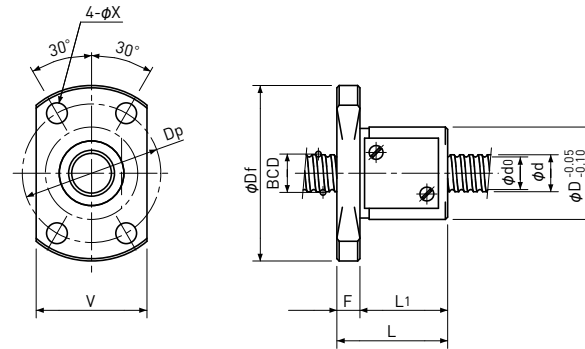
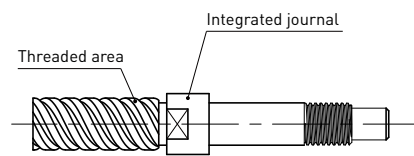


Rolled Ball Screws

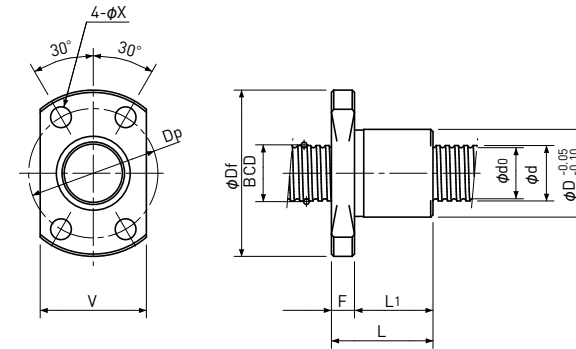
Single Nut with Flange

Backlash type

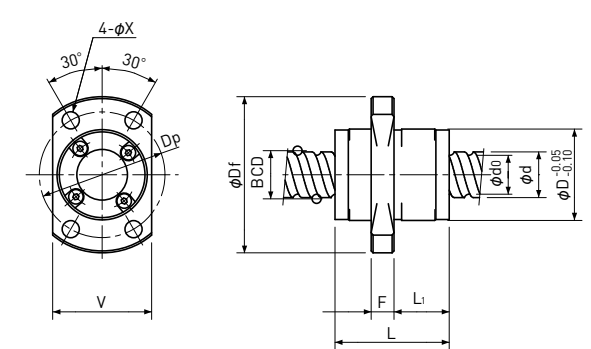
■ Rolled Ball Screws with integrated journal are available ($\phi 12$ or less only), which have larger diameter than threaded area shown below.



Type-1:Return-plate type



Type-2:Internal-deflector type or End-deflector type



Type-3:End-cap type or End-deflector type

Unit : mm

Ball Nut Model number	Shaft nominal dia. d	Lead	Ball size	BCD	Lead angle	Root dia. d ₀	Number of Circuit	Basic Load Rating N		Nut Rigidity N/μm	Nut dimension										Ball Nut Model number
								Dynamic Ca	Static Coa		Nut type	D	Df	L	L ₁	F	W	V	Dp	Bolt Hole X	
MRB 1002 **	10	2	1.5875	10.30	3°32'	8.6	3.7×1	2700	5300	134	1	23	40	24	19	5	—	25	32	4.5	MRB 1002 **
MRB 1002K	10	2	1.2	10.30	3°32'	9.0	1×3	1450	3000	93	2	17	34	19	14	5	—	21	26	4.5	MRB 1002K
MRB 1003	10	3	2.0	10.30	5°18'	8.2	3.7×1	3900	7200	140	1	24	41	29	24	5	—	26	33	4.5	MRB 1003
MRB 1004	10	4	2.0	10.30	7°03'	8.2	2.7×1	3000	5200	104	1	24	41	28	23	5	—	26	33	4.5	MRB 1004
MRB 1005	10	5	2.0	10.30	8°47'	8.2	2.7×1	3000	5200	103	2	23	40	26	21	5	—	25	32	4.5	MRB 1005
MRB 1006	10	6	2.0	10.30	10°30'	8.2	2.7×1	3000	5000	102	1	26	42	33	28	5	—	28	34	4.5	MRB 1006
MRB 1010	10	10	2.0	10.50	16°52'	8.4	1.6×2	3300	5900	117	3	23	40	24	13	5	—	25	32	4.5	MRB 1010
MRB 1012	10	12	2.0	10.50	19°59'	8.4	1.6×2	3300	6200	115	3	23	40	28	17	5	—	25	32	4.5	MRB 1012
MRB 1015	10	15	2.0	10.50	24°27'	8.4	1.6×2	3300	6400	110	3	23	40	33	22	5	—	25	32	4.5	MRB 1015
MRB 1020	10	20	1.5875	10.40	31°28'	8.7	0.7×4	2100	4000	88	3	20	37	23	13	5	—	22	29	4.5	MRB 1020
MRB 1202	12	2	1.5875	12.30	2°58'	10.6	3.7×1	3000	6400	156	1	25	42	24	19	5	—	27	34	4.5	MRB 1202
MRB 1202K	12	2	1.2	12.30	2°58'	11.0	1×3	1600	3700	109	2	19	36	19	14	5	—	23	28	4.5	MRB 1202K
MRB 1210	12	10	2.381	12.65	14°07'	10.2	1.7×2	5100	9800	152	3	24	41	30	14.5	6	—	26	33	4.5	MRB 1210

Note 1) All models are Right-hand screw.

Note 2) The diameter of the Screw Shaft both ends must be less than the Screw Shaft Root diameter, because of production and Nut assembly reason.

Note 3) Ball Nut dimension is without seal at the both ends. All type of Ball Nuts cannot equip with seals.

Note 4) Rigidity

The Rigidity values shown in the table are theoretical values calculated from the amount of Elastic Displacement under the Axial load equivalent to 30% of the Basic Dynamic Load Rating Ca.

For Axial load condition other than the above, see the formula in p-A823, you can calculate Rigidity using this formula.

Note 5) Stainless Rolled Ball Screw

Stainless Rolled Ball Screw is available for Ball Nut Model Number marked **.