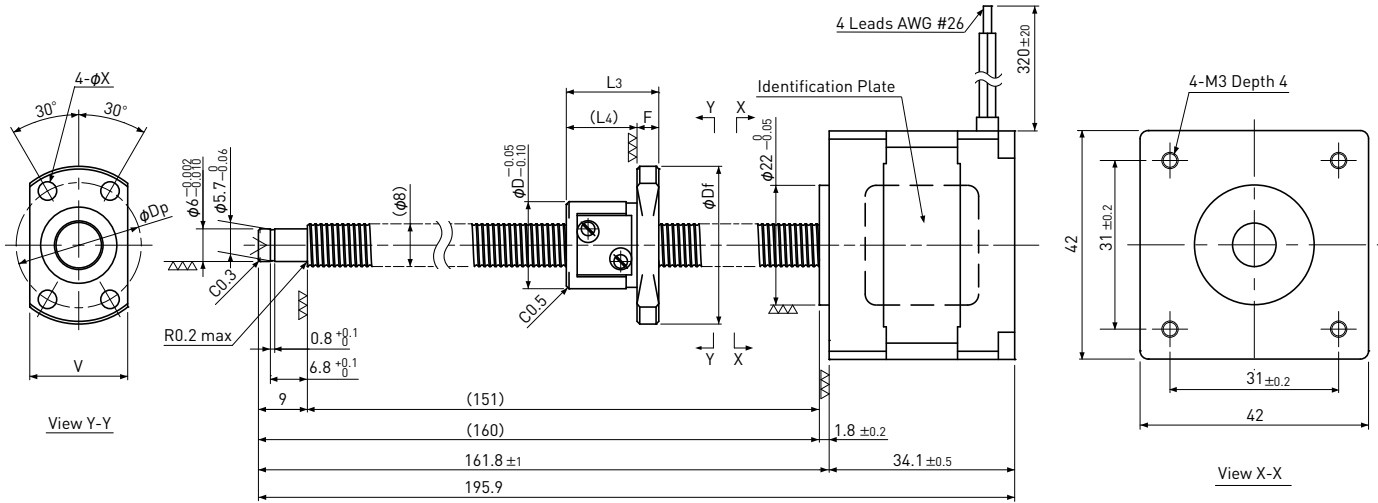


Rolled Ball Screw + 2-phase Stepping Motor

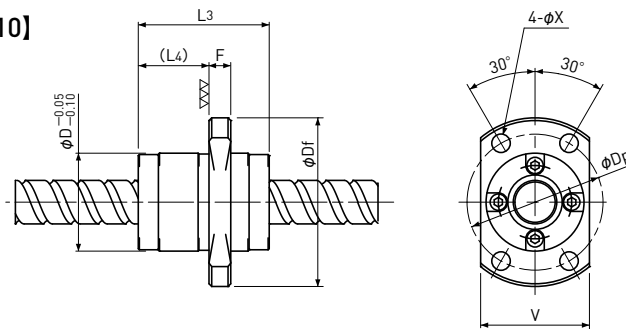
# DMBR □42 / NEMA 17

Shaft dia.  $\phi 8$

[DMBR0801 / DMBR0802 / DMBR0805]



[DMBR0810]



Unit:mm

Model	Lead	Travel	L <sub>3</sub>	L <sub>4</sub>	D	D <sub>f</sub>	F	V	D <sub>p</sub>	X	Mass (g)	Motor Wire	
												A	B
DMBR0801-17E2115	1	118	17	13	16	29	4	18	23	3.4	298	Red	Red/White
DMBR0802-17E2115	2	110	24	19	20	37	5	22	29	4.5	322	Green	Green/White
DMBR0805-17E2115	5	107	28	24	18	31	4	20	25	3.4	318		
DMBR0810-17E2115	10	114	24	13	18	31	4	20	25	3.4	308		

Recommended Drivers	SD4030B3
---------------------	----------

Note) Refer to page P161 for connection diagram of recommended Drivers.

Ball Screw Specifications	
Accuracy grade	JIS Ct7
Thread direction	Right
Axial play	Max 0.03mm
Ball Screw material	Chrome-molybdenum steel
Surface hardness	Min. HRC58
Lubricant	KSS original grease MSG No.2

Motor Specifications	
Motor Model	17E2115
Basic step angle	1.8°
Driving method	2-phase Bi-polar
Rated Voltage	DC 2.8 V
Rated current	DC 1.5A/phase
Winding resistance	1.85Ω
Holding Torque	0.18Nm
Rotor inertia	36.0g · cm <sup>2</sup>
Operating temperature	-10°C ~ 50°C

Note) Please contact KSS if different journal profile or length from the above is required.