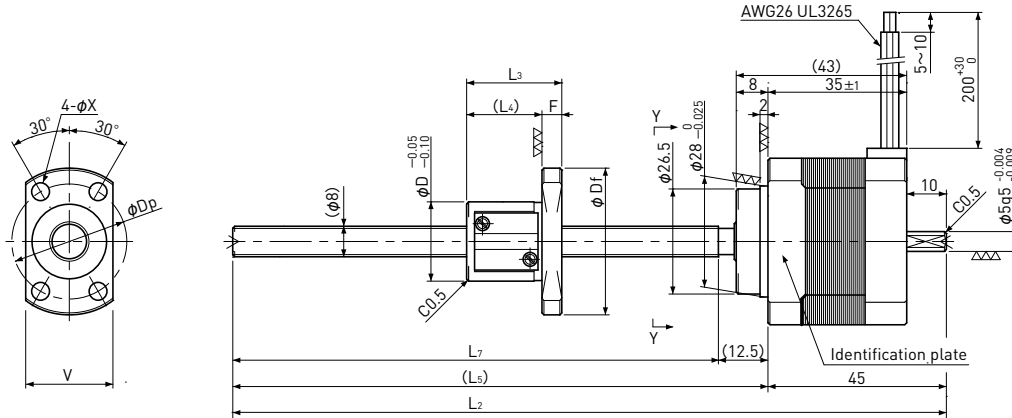


Rolled Ball Screw + 2-Phase Stepping Motor

# 2TMB □42 / NEMA 17

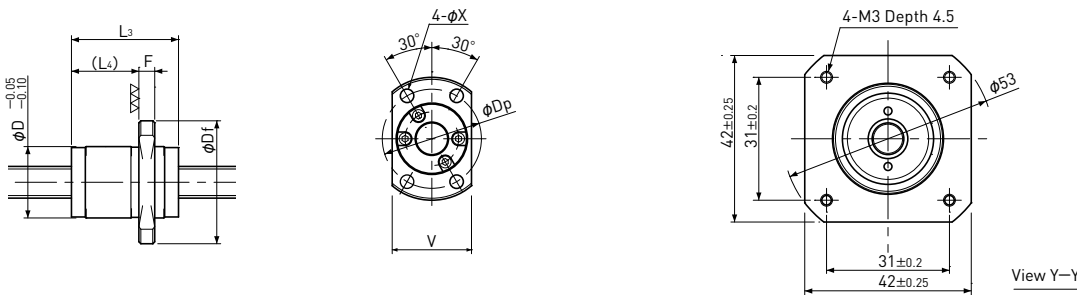
Shaft dia.  $\phi 8$

[2TMB0801 / 2TMB0802 / 2TMB0805]



Motor Wire	
A	Red
$\bar{A}$	Blue
B	Yellow
$\bar{B}$	White

[2TMB0812]



Unit:mm

Model	Lead	Travel	Reference Thrust (N)	L <sub>2</sub>	L <sub>5</sub>	L <sub>7</sub>	D	Df	F	L <sub>3</sub>	L <sub>4</sub>	V	D <sub>p</sub>	X	Mass (g)
2TMB0801	1	150	75	240	195	182.5	16	29	4	17	13	18	23	3.4	350
2TMB0802	2	150	100	250	205	192.5	20	37	5	24	19	22	29	4.5	400
2TMB0805	5	150	50	250	205	192.5	18	31	4	28	24	20	25	3.4	400
2TMB0812	12	150	25	250	205	192.5	18	31	4	27	17	20	25	3.4	400

Recommended Drivers	SD4030B3
---------------------	----------

Note) Refer to page P162 for connection diagram of recommended Drivers.

Ball Screw Specifications	
Accuracy grade	Equivalent to JIS Ct7
Thread direction	Right
Axial play	0.03mm or less
Shaft material	Stainless steel
Nut material	Chrome - molybdenum steel
Surface hardness	Min. HRC55 (Thread area)
Lubricant	KSS original grease MSG No.2

Note) Please refer to page P119 for about end-journal turning.

Motor Specifications	
Basic step angle	1.8°
Driving method	2-phase Bi-polar
Rated Voltage	DC 2.2 V
Rated current	DC 2.0 A/phase
Winding resistance	1.1 Ω
Holding Torque	0.24 Nm
Rotor inertia	42 g · cm <sup>2</sup>
Operating temperature	-20°C~50°C