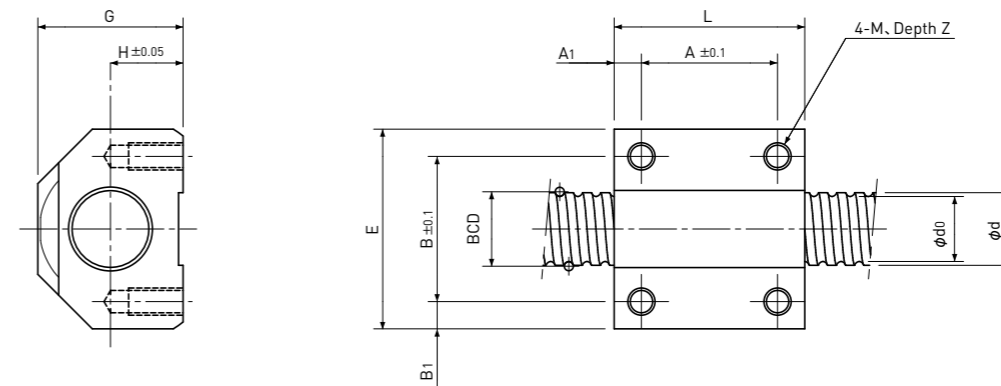


Square type Single Nut

Backlash type/Preload type



Unit:mm

Ball Nut Model number	Shaft nominal dia. d	Lead	Ball size	BCD	Lead angle	Root dia. d ₀	Number of Circuit	Basic Load Rating N		Nut Rigidity N/μm	Nut dimension								Ball Nut Model number		
								Dynamic Ca	Static Coa		L	E	G	H	A	A ₁	B	B ₁		M	Z
KS 0601 B	6	1	0.8	6.15	2°58'	5.3	3.7×1	680 / 430	1200 / 610	75 / 63	20	20	14	7	14	3	14	3	M3	6	KS 0601 B
KS 0602 A	6	2	1.0	6.20	5°52'	5.1	2.7×1	750 / 470	1200 / 590	58 / 49	20	20	14	7	14	3	14	3	M3	6	KS 0602 A
KS 0801 B	8	1	0.8	8.15	2°15'	7.3	3.7×1	780 / 490	1650 / 820	95 / 80	21	22	16	8	15	3	16	3	M3	6	KS 0801 B
KS 0802 A	8	2	1.0	8.20	4°26'	7.1	2.7×1	850 / 540	1600 / 800	74 / 61	21	22	16	8	15	3	16	3	M3	6	KS 0802 A
KS 1001 B	10	1	0.8	10.15	1°48'	9.3	3.7×1	840 / 530	2000 / 1000	113 / 95	26	28	22	12	18	4	20	4	M4	7	KS 1001 B
KS 1002 B	10	2	1.5875	10.30	3°32'	8.6	3.7×1	2700 / 1750	5300 / 2700	134 / 112	26	28	23.5	12	18	4	20	4	M4	7	KS 1002 B

Basic Load Rating N		Nut Rigidity N/μm
Dynamic Ca	Static Coa	
1000 / 640	3300 / 1650	164 / 138
		Preload type
		Backlash type

- Note 1) The diameter of one of the Screw Shaft ends must be less than the Screw Shaft Root diameter, otherwise Ball Nut cannot be installed.
- Note 2) Ball Nut dimension is without seal at the both ends. All type of Ball Nuts cannot equip with seals.
- Note 3) The Rigidity values shown in the table are theoretical values of Ball Nut Rigidity calculated from the amount of Elastic Displacement under the following conditions.
Backlash type ; Apply the Axial load equivalent to 30% of the Basic Dynamic Load Rating Ca.
Preload type ; Apply the Preload equivalent to 5% of the Basic Dynamic Load Rating Ca.
For Axial load or Preload condition other than the above, see the formula in page A823 or page A824, you can calculate Rigidity using this formula.
- Note 4) All models are Right-hand Screw. If Left-hand Screw is required, please ask KSS representative.
- Note 5) Basic Load Rating and Rigidity for Backlash type and Preload type are described in the same cell.