

Flexible Link

FX Series

Vol.32.2



This product is a compact sub-unit that combined
a Ball Screw and Fixed side Support Unit.

Flexible Link

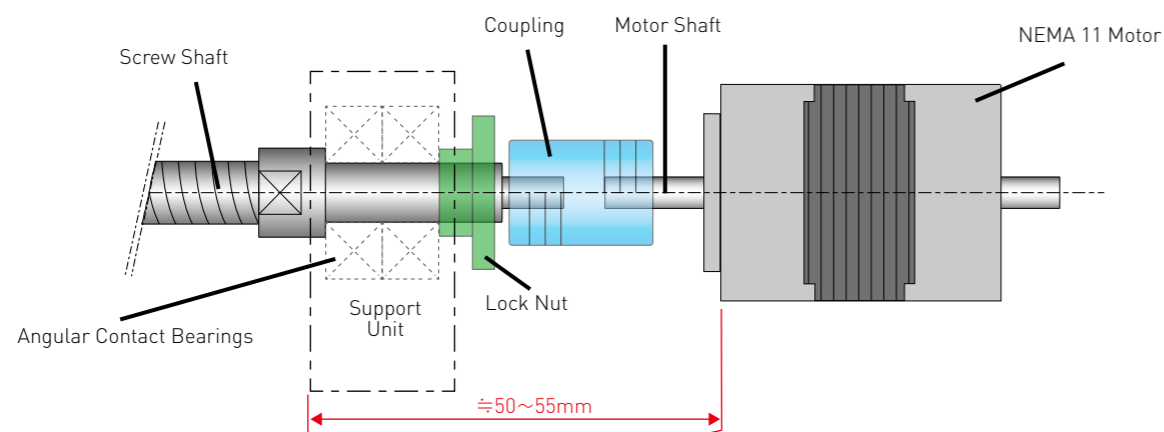
FX Series



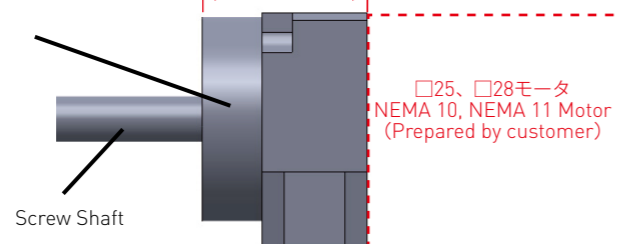
Features

- KSS's proprietary coupling technology minimizes the connecting dimensions and provides the flexibility in the combination of Ball Screw and Motor that can be obtained with coupling connections.
- The design allows for NEMA 10 size Servo Motors and NEMA 11 size Step Motors to be mounted. This product is designed with a flexible concept to accommodate a wide range of the Motor variations.

【Normal Connection】



【Flexible Link】



Reference : Ball Screw Shaft diameter $\phi 6$ mm, compared to a general coupling connection with a NEMA 11 Motor.

Model number notation

FX **A** **28** - **NSG0601 - 85R120 C3**

① ② ③ ④

- ① Series No.
FX : Flexible Link series
- ② Fixing method
A, B, C, D, E (See Page 4 Fig.1: Fixing method)
- ③ Attachable Motor
28 means NEMA 11
- ④ Ball Screw model number
The model number changes depending on the Screw type mounted on the Flexible Link.

Specifications

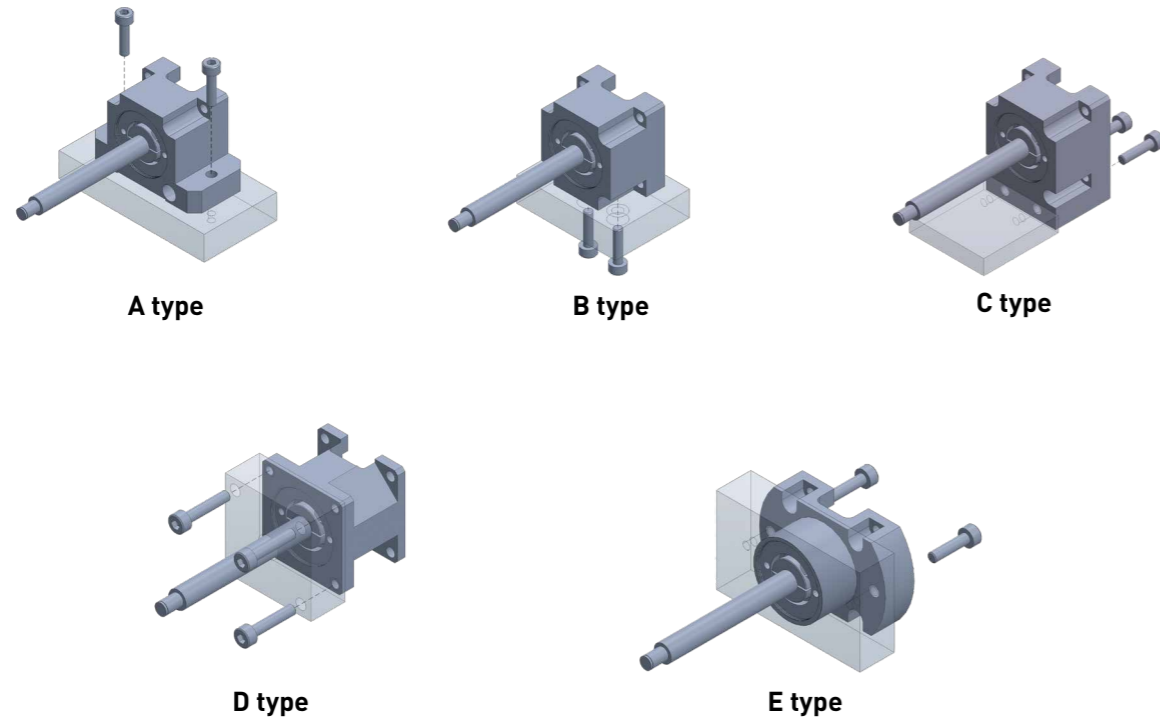
General Specifications		Remarks
Permissible speed	3,000 min ⁻¹	—
Axial Load Limit	80N	※See Note below
Material of Housing	Aluminum	Black anodizing
Operating Temperature	0~40°C	No condensation

※Note
The values represent the Axial Load allowed by the Flexible Link and do not guarantee the life of the Ball Screw.

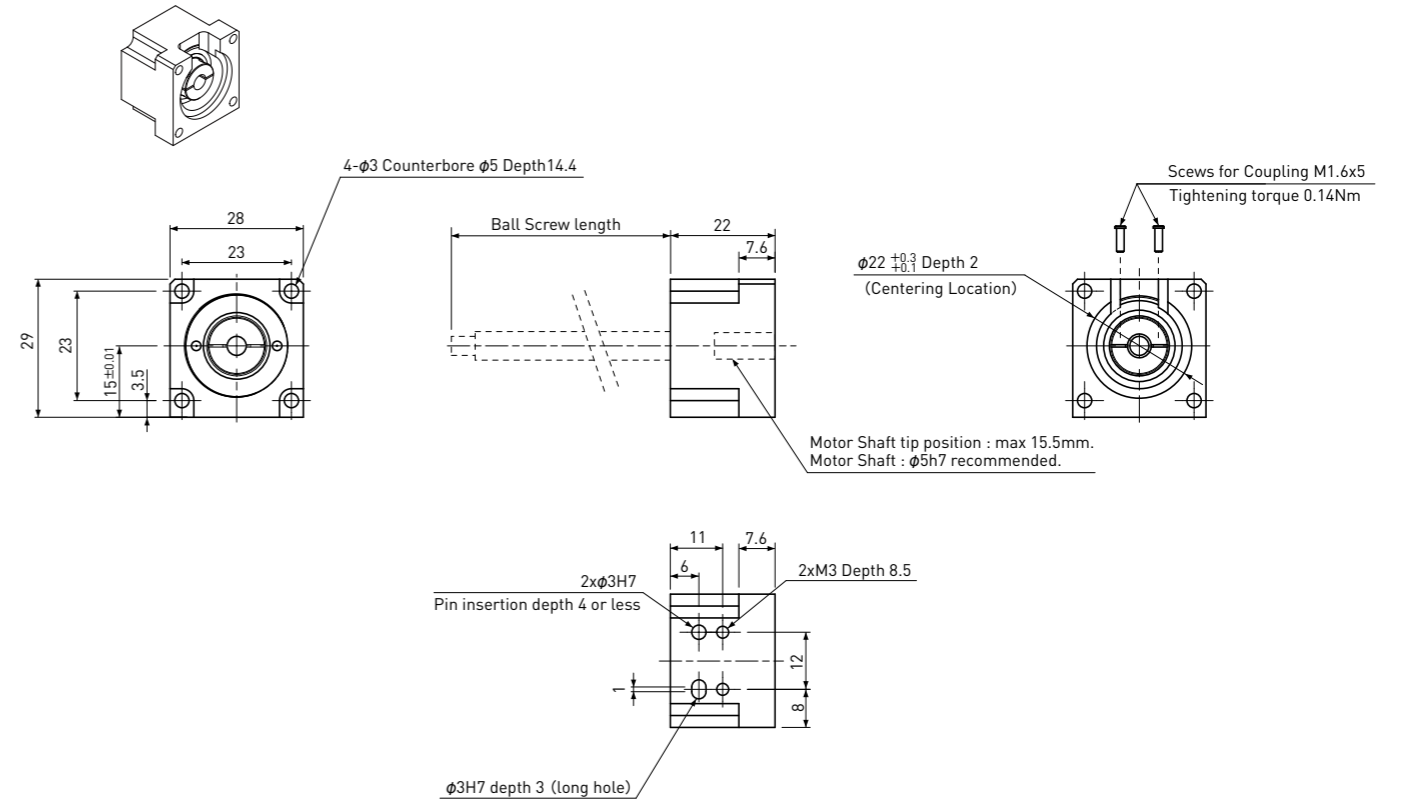
Precautions

- The Screws that can be mounted on this product are Precision Ball Screws and Rolled Ball Screws.
- Drawings with Ball Screws will be provided separately.
- The limit length of Ball Screw is depending on the Screw type. Please ask KSS representative.

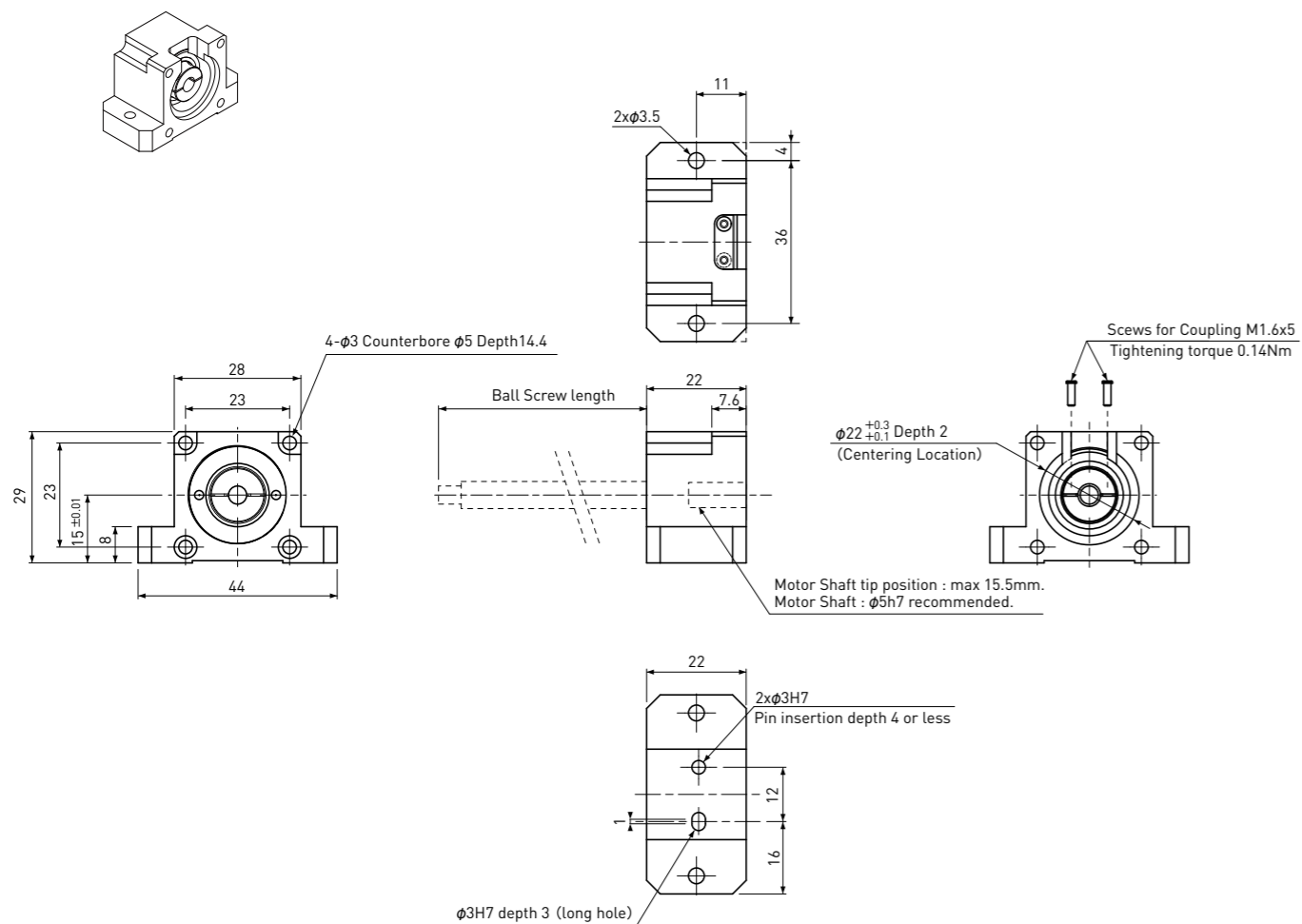
Fig.1 : Fixing method



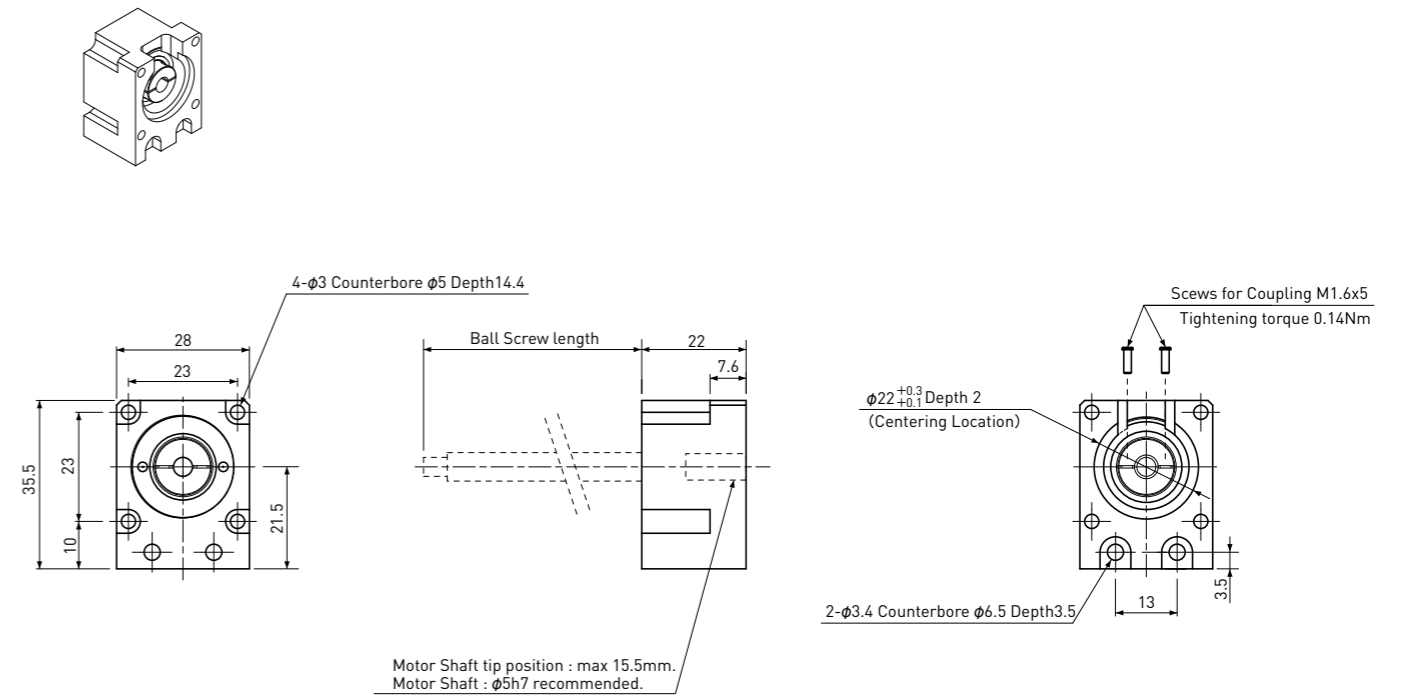
B type



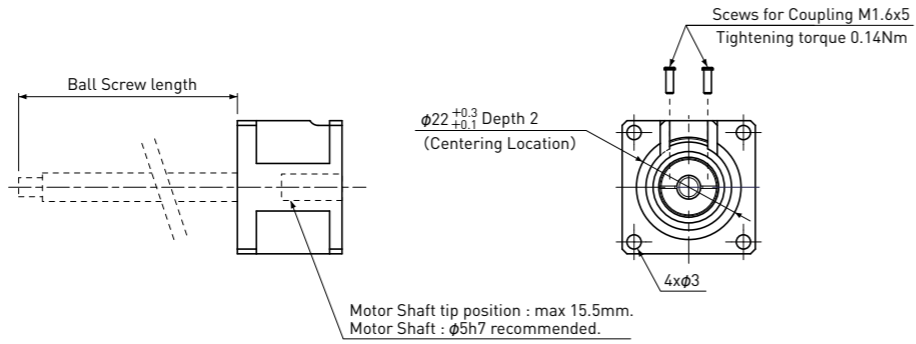
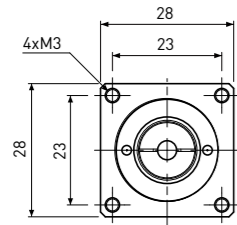
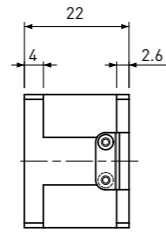
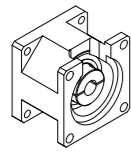
A type



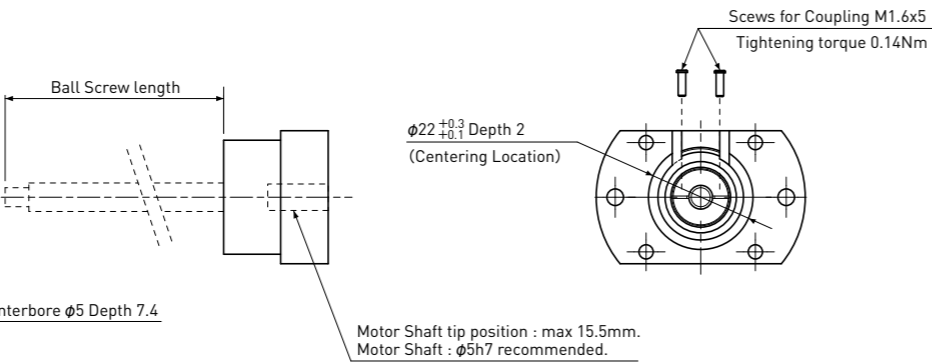
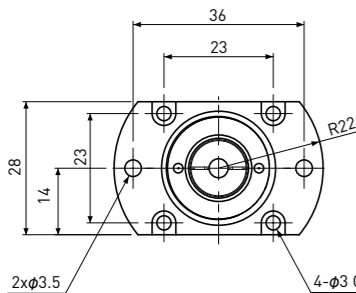
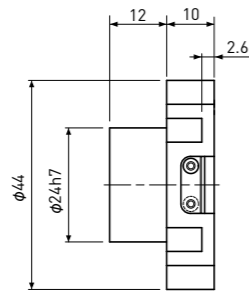
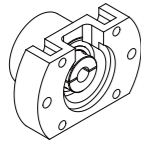
C type



D type

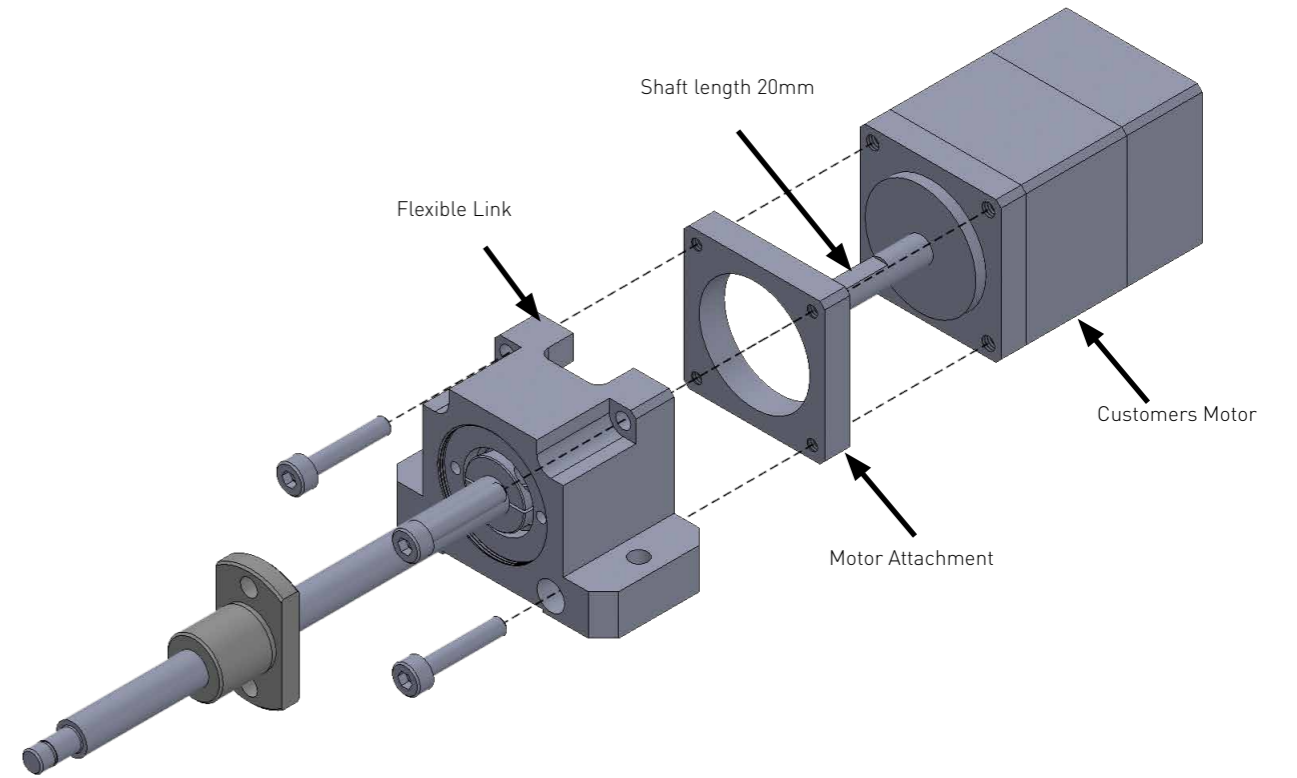


E type



Motor Attachment

This product is designed exclusively for Motors with 15mm Shaft length. Please note that Motors with 20mm Shaft length cannot be mounted. In this case, Motor Attachment is required to mount the Motor. For more information about Motor Attachment, please ask KSS representative.



Installation on Linear Motion System

The Flexible Link does not have an anti-rotating device. When using the Flexible Link, it is necessary for the customer to configure an external anti-rotating device (see fig. below).

